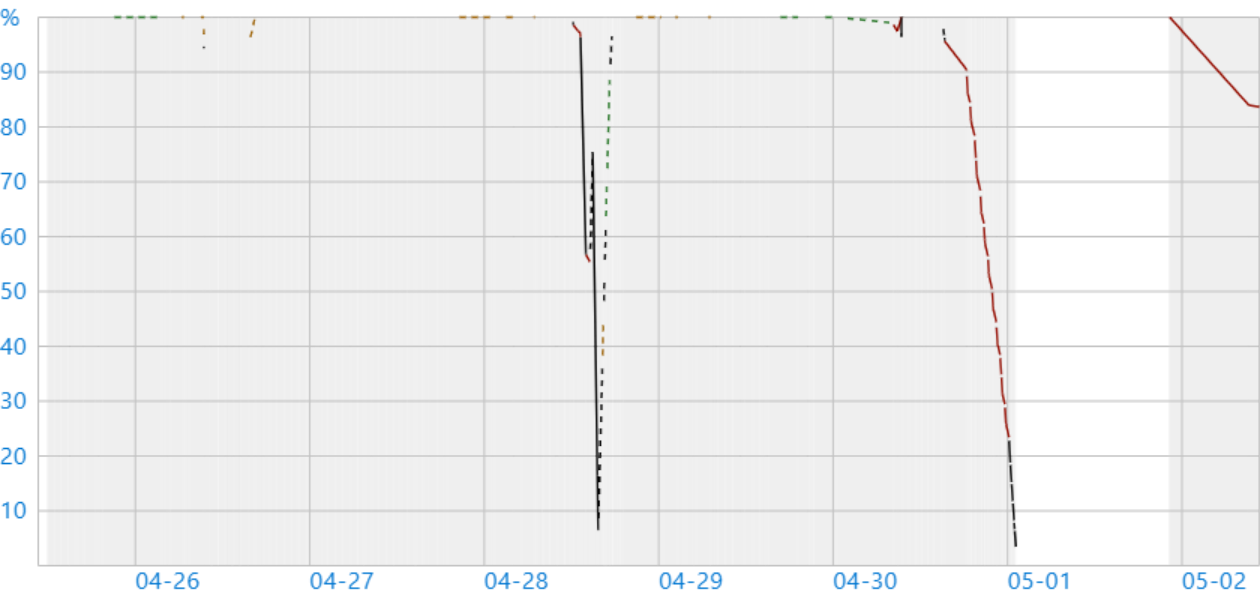


System Power Report

COMPUTER NAME	DESKTOP-NH75ULR
SYSTEM PRODUCT NAME	Dell Inc. Latitude 7420
BIOS	1.41.0 02/04/2025
OS BUILD	22621.1.amd64fre.ni_release.220506-1250
MODERN STANDBY ENABLED	Yes
PLATFORM ROLE	Mobile
REPORT TIME	2025-04-25 10:38:01

System Power State Transitions

Battery drain over the last 3 days



Legend

GRAPH LINE	DESCRIPTION
Dotted	AC power
Solid	Battery power
No line	System powered off
Grey	Active Scenario
Green	Low System Activity
Orange	Moderate System Activity
Red	High System Activity
Violet	Abnormal Shutdown

Filter Option

Session Length:

☒ All ☐ > 10:00

States:

☒ All ☐ Active ☐ Screen Off ☐ Sleep ☐ Hibernate ☐ Shutdown ☐ Bug Check

	START TIME	DURATION	STATE	ENERGY CHANGE		CHANGE RATE		% LOW POWER STATE TIME	% CAPACITY REMAINING AT START
1	2025-04-25 09:57:40	0:00:10	Screen Off	-	-	-	Charge	-	100%
2	09:57:51	1:53:01	Sleep	-	-	-	Charge	-	100%
3	11:50:52	0:00:00	Screen Off	-	-	-	Charge	-	100%
4	11:50:53	0:00:00	Sleep	-	-	-	Charge	-	100%
5	11:50:53	0:00:36	Screen Off	-	-	-	Charge	-	100%
6	11:51:29	0:00:01	Sleep	-	-	-	Charge	-	100%
7	11:51:30	0:00:01	Screen Off	-	-	-	Charge	-	100%
8	11:51:32	0:00:08	Sleep	-	-	-	Charge	-	100%
9	11:51:40	1:45:15	Active	-	-	-	Charge	-	100%
10	13:36:54	0:09:51	Screen Off	-	-	-	Charge	-	100%
11	13:46:45	1:05:29	Sleep	-	-	-	Charge	SW: 95% HW: 91%	100%
12	14:52:18	2:00:52	Active	-	-	-	Charge	-	100%
13	16:53:09	0:09:38	Screen Off	-	-	-	Charge	-	100%
14	17:02:48	1:30:51	Sleep	-	-	-	Charge	SW: 98% HW: 94%	100%
15	18:33:39	0:01:56	Active	-	-	-	Charge	-	100%
16	18:35:33	0:00:06	Screen Off	-	-	-	Charge	-	100%
17	18:35:40	0:00:08	Active	-	-	-	Charge	-	100%
18	18:35:48	0:00:01	Screen Off	-	-	-	Charge	-	100%
19	18:35:49	0:16:40	Sleep	-	-	-	Charge	SW: 98% HW: 93%	100%
20	18:52:24	0:37:41	Active	-	-	-	Charge	-	100%
21	19:30:03	0:00:02	Screen Off	-	-	-	Charge	-	100%
22	19:30:05	9:14:21	Sleep	-	-	-	Charge	SW: 95% HW: 90%	100%
23	2025-04-26 04:44:21	0:00:58	Screen Off	-	-	-	Charge	-	100%
24	04:45:24	4:40:29	Sleep	-	-	-	Charge	SW: 88% HW: 84%	100%
25	09:25:44	0:00:52	Active	1 581 mWh	6% of battery	108 901 mW	Charge	-	100%
26	09:26:36	0:00:00	Screen Off	-	-	-	Charge	-	94%
27	09:26:37	0:00:00	Sleep	-	-	-	Charge	-	94%
28	09:26:37	0:00:13	Active	-	-	-	Charge	-	94%
29	09:26:51	0:00:00	Screen Off	-	-	-	Charge	-	94%
30	09:26:51	0:00:27	Sleep	-	-	-	Charge	-	94%

	START TIME	DURATION	STATE	ENERGY CHANGE		CHANGE RATE		% LOW POWER STATE TIME	% CAPACITY REMAINING AT START
31	09:27:18	0:00:04	Active	-	-	-	Charge	-	94%
32	09:27:23	0:00:00	Screen Off	-	-	-	Charge	-	94%
33	09:27:23	0:00:01	Sleep	-	-	-	Charge	-	94%
34	09:27:24	0:00:31	Active	15 mWh	0% of battery	1 735 mW	Charge	-	94%
35	09:27:55	33:10:15	Screen Off	-	-	-	Charge	-	94%
36	2025-04-27 18:38:10	9:28:23	Sleep	-	-	-	Charge	SW: 88% HW: 84%	100%
37	2025-04-28 04:06:27	0:00:00	Screen Off	-	-	-	Charge	-	100%
38	04:06:33	3:46:00	Sleep	-	-	-	Charge	SW: 85% HW: 79%	100%
39	07:52:24	0:00:39	Active	-	-	-	Charge	-	100%
40	07:53:03	0:09:50	Screen Off	-	-	-	Charge	-	100%
41	08:02:53	0:12:13	Sleep	-	-	-	Charge	SW: 97% HW: 92%	100%
42	08:15:03	1:41:35	Active	-	-	-	Charge	-	100%
43	09:56:36	0:00:17	Screen Off	-	-	-	Charge	-	100%
44	09:56:54	0:01:57	Sleep	-	-	-	Charge	-	100%
45	09:58:54	2:16:38	Active	-	-	-	Charge	-	100%
46	12:15:30	0:00:15	Screen Off	228 mWh	1% of battery	52 203 mW	Charge	-	100%
47	12:15:46	0:00:03	Screen Off	-	-	-	Drain	-	99%
48	12:15:50	0:00:09	Active	107 mWh	0% of battery	41 039 mW	Drain	-	99%
49	12:15:59	0:00:00	Screen Off	-	-	-	Drain	-	99%
50	12:15:59	0:00:10	Sleep	30 mWh	0% of battery	10 374 mW	Drain	-	99%
51	12:16:10	0:00:05	Screen Off	31 mWh	0% of battery	19 975 mW	Drain	-	99%
52	12:16:20	0:58:17	Sleep	425 mWh	2% of battery	437 mW	Drain	SW: 99% HW: 95%	99%
53	13:14:39	0:44:42	Active	11 218 mWh	40% of battery	15 053 mW	Drain	-	97%
54	13:59:19	0:00:00	Screen Off	-	-	-	Drain	-	57%
55	13:59:20	0:00:03	Sleep	-	-	-	Drain	-	57%
56	13:59:23	0:00:05	Screen Off	61 mWh	0% of battery	37 581 mW	Drain	-	57%
57	13:59:34	0:33:46	Sleep	364 mWh	1% of battery	646 mW	Drain	SW: 92% HW: 88%	57%
58	14:33:22	0:22:21	Active	-	-	-	Charge	-	55%
59	14:55:43	0:44:58	Active	19 000 mWh	68% of battery	25 348 mW	Drain	-	75%
60	15:40:40	0:00:00	Screen Off	15 mWh	0% of battery	93 802 mW	Drain	-	7%

	START TIME	DURATION	STATE	ENERGY CHANGE		CHANGE RATE		% LOW POWER STATE TIME	% CAPACITY REMAINING AT START
61	15:40:40	0:00:09	Active	91 mWh	0% of battery	34 697 mW	Drain	-	7%
62	15:41:19	0:33:42	Active	-	-	-	Charge	-	6%
63	16:15:00	0:09:34	Screen Off	-	-	-	Charge	-	36%
64	16:24:35	0:01:15	Sleep	-	-	-	Charge	SW: 81% HW: 78%	45%
65	16:25:45	0:17:32	Active	-	-	-	Charge	-	46%
66	16:43:16	0:09:48	Screen Off	-	-	-	Charge	-	61%
67	16:53:05	0:24:25	Sleep	-	-	-	Charge	SW: 98% HW: 94%	70%
68	17:17:26	0:22:08	Active	-	-	-	Charge	-	89%
69	17:39:33	0:09:49	Screen Off	-	-	-	Charge	-	98%
70	17:49:23	0:25:39	Sleep	-	-	-	Charge	SW: 98% HW: 95%	100%
71	18:14:58	0:56:51	Active	-	-	-	Charge	-	100%
72	19:11:48	0:09:41	Screen Off	-	-	-	Charge	-	100%
73	19:21:30	7:58:27	Sleep	-	-	-	Charge	SW: 89% HW: 84%	100%
74	2025-04-29 03:19:53	0:00:04	Screen Off	-	-	-	Charge	-	100%
75	03:20:02	1:28:57	Sleep	-	-	-	Charge	SW: 74% HW: 67%	100%
76	04:48:50	0:00:00	Screen Off	-	-	-	Charge	-	100%
77	04:48:55	3:07:04	Sleep	-	-	-	Charge	SW: 76% HW: 69%	100%
78	07:55:53	3:55:59	Active	-	-	-	Charge	-	100%
79	11:51:50	0:00:21	Screen Off	-	-	-	Charge	-	100%
80	11:52:12	1:03:41	Sleep	-	-	-	Charge	SW: 99% HW: 94%	100%
81	12:55:59	1:42:44	Active	-	-	-	Charge	-	100%
82	14:38:42	0:09:35	Screen Off	-	-	-	Charge	-	100%
83	14:48:17	0:04:56	Sleep	-	-	-	Charge	SW: 95% HW: 91%	100%
84	14:53:09	0:13:44	Active	-	-	-	Charge	-	100%
85	15:06:52	0:00:06	Screen Off	-	-	-	Charge	-	100%
86	15:06:58	5:24:37	Sleep	-	-	-	Charge	SW: 98% HW: 93%	100%
87	20:31:48	0:16:54	Active	-	-	-	Charge	-	100%
88	20:48:41	0:00:01	Screen Off	-	-	-	Charge	-	100%
89	20:48:42	0:00:41	Sleep	-	-	-	Charge	-	100%
90	20:49:24	0:24:04	Active	-	-	-	Charge	-	100%

	START TIME	DURATION	STATE	ENERGY CHANGE		CHANGE RATE		% LOW POWER STATE TIME		% CAPACITY REMAINING AT START
91	21:13:26	0:09:45	Screen Off	-	-	-	Charge	-	-	100%
92	21:23:12	10:55:08	Sleep	289 mWh	1% of battery	26 mW	Charge	SW: 99%	HW: 94%	100%
93	2025-04-30 08:18:16	0:00:00	Screen Off	-	-	-	Drain	-	-	99%
94	08:18:16	0:00:04	Screen Off	46 mWh	0% of battery	34 158 mW	Drain	-	-	99%
95	08:18:26	1:06:31	Sleep	638 mWh	2% of battery	575 mW	Drain	SW: 96%	HW: 92%	99%
96	09:24:48	0:00:01	Active	-	-	-	Drain	-	-	97%
97	09:24:50	0:00:56	Active	-	-	-	Charge	-	-	97%
98	09:25:47	0:00:05	Active	988 mWh	4% of battery	610 886 mW	Drain	-	-	100%
99	09:25:54	2:40:15	Active	-	-	-	Charge	-	-	96%
100	12:06:08	0:04:34	Screen Off	-	-	-	Charge	-	-	100%
101	12:10:42	0:00:30	Active	-	-	-	Charge	-	-	100%
102	12:11:13	0:09:32	Screen Off	-	-	-	Charge	-	-	100%
103	12:20:45	0:33:28	Sleep	-	-	-	Charge	SW: 99%	HW: 0%	100%
104	12:54:13	2:25:59	Active	-	-	-	Charge	-	-	100%
105	15:20:09	0:00:25	Active	1 156 mWh	4% of battery	161 745 mW	Drain	-	-	100%
106	15:20:35	0:00:00	Screen Off	-	-	-	Drain	-	-	96%
107	15:20:35	0:00:07	Sleep	30 mWh	0% of battery	13 702 mW	Drain	-	-	96%
108	15:20:43	0:00:05	Screen Off	30 mWh	0% of battery	20 514 mW	Drain	-	-	96%
109	15:20:53	3:02:35	Sleep	1 460 mWh	5% of battery	480 mW	Drain	SW: 98%	HW: 92%	96%
110	18:23:28	0:00:00	Screen Off	-	-	-	Drain	-	-	90%
111	18:23:28	0:00:31	Active	213 mWh	1% of battery	24 729 mW	Drain	-	-	90%
112	18:23:59	0:09:43	Screen Off	942 mWh	3% of battery	5 807 mW	Drain	-	-	89%
113	18:33:43	0:17:46	Sleep	411 mWh	1% of battery	1 387 mW	Drain	SW: 0%	-	86%
114	18:51:31	0:00:00	Screen Off	-	-	-	Drain	-	-	84%
115	18:51:31	0:00:31	Active	121 mWh	0% of battery	14 018 mW	Drain	-	-	84%
116	18:52:02	0:09:40	Screen Off	851 mWh	3% of battery	5 278 mW	Drain	-	-	84%
117	19:01:43	0:27:10	Sleep	639 mWh	2% of battery	1 411 mW	Drain	SW: 0%	-	81%
118	19:28:55	0:10:17	Screen Off	1 064 mWh	4% of battery	6 204 mW	Drain	-	-	78%
119	19:39:17	0:00:00	Screen Off	-	-	-	Drain	-	-	74%
120	19:39:17	0:00:31	Active	106 mWh	0% of battery	12 252 mW	Drain	-	-	74%

	START TIME	DURATION	STATE	ENERGY CHANGE		CHANGE RATE		% LOW POWER STATE TIME	% CAPACITY REMAINING AT START
121	19:39:48	0:09:55	Screen Off	867 mWh	3% of battery	5 245 mW	Drain	-	74%
122	19:49:43	0:26:24	Sleep	669 mWh	2% of battery	1 520 mW	Drain	SW: 0%	71%
123	20:16:07	0:00:00	Screen Off	45 mWh	0% of battery	9 050 785 mW	Drain	-	68%
124	20:16:07	0:00:31	Active	228 mWh	1% of battery	26 369 mW	Drain	-	68%
125	20:16:38	0:09:34	Screen Off	897 mWh	3% of battery	5 621 mW	Drain	-	67%
126	20:26:13	0:19:04	Sleep	502 mWh	2% of battery	1 579 mW	Drain	SW: 0%	64%
127	20:45:17	0:00:00	Screen Off	-	-	-	Drain	-	62%
128	20:45:17	0:00:31	Active	122 mWh	0% of battery	14 098 mW	Drain	-	62%
129	20:45:49	0:09:54	Screen Off	912 mWh	3% of battery	5 526 mW	Drain	-	62%
130	20:55:43	0:23:16	Sleep	593 mWh	2% of battery	1 529 mW	Drain	SW: 0%	59%
131	21:18:59	0:00:00	Screen Off	-	-	-	Drain	-	56%
132	21:18:59	0:00:31	Active	122 mWh	0% of battery	14 093 mW	Drain	-	56%
133	21:19:30	0:09:42	Screen Off	881 mWh	3% of battery	5 445 mW	Drain	-	56%
134	21:29:13	0:24:07	Sleep	624 mWh	2% of battery	1 552 mW	Drain	SW: 0%	53%
135	21:53:20	0:00:00	Screen Off	-	-	-	Drain	-	50%
136	21:53:20	0:00:31	Active	122 mWh	0% of battery	14 157 mW	Drain	-	50%
137	21:53:51	0:09:51	Screen Off	881 mWh	3% of battery	5 359 mW	Drain	-	50%
138	22:03:43	0:25:00	Sleep	639 mWh	2% of battery	1 534 mW	Drain	SW: 0%	47%
139	22:28:43	0:00:00	Screen Off	-	-	-	Drain	-	44%
140	22:28:43	0:00:31	Active	198 mWh	1% of battery	22 887 mW	Drain	-	44%
141	22:29:14	0:09:58	Screen Off	897 mWh	3% of battery	5 397 mW	Drain	-	44%
142	22:39:13	0:19:54	Sleep	532 mWh	2% of battery	1 604 mW	Drain	SW: 0%	40%
143	22:59:07	0:10:05	Screen Off	943 mWh	3% of battery	5 604 mW	Drain	-	38%
144	23:09:17	0:00:00	Screen Off	-	-	-	Drain	-	35%
145	23:09:17	0:00:31	Active	107 mWh	0% of battery	12 419 mW	Drain	-	35%
146	23:09:48	0:09:55	Screen Off	912 mWh	3% of battery	5 516 mW	Drain	-	34%
147	23:19:43	0:18:08	Sleep	471 mWh	2% of battery	1 558 mW	Drain	SW: 0%	31%
148	23:37:51	0:00:00	Screen Off	-	-	-	Drain	-	29%
149	23:37:51	0:00:30	Active	122 mWh	0% of battery	14 168 mW	Drain	-	29%
150	23:38:22	0:09:50	Screen Off	866 mWh	3% of battery	5 279 mW	Drain	-	29%

	START TIME	DURATION	STATE	ENERGY CHANGE		CHANGE RATE		% LOW POWER STATE TIME		% CAPACITY REMAINING AT START
151	23:48:13	0:24:49	Sleep	654 mWh	2% of battery	1 581 mW	Drain	SW: 0%	-	26%
152	2025-05-01 00:13:02	0:00:00	Screen Off	-	-	-	Drain	-	-	23%
153	00:13:02	0:00:30	Active	136 mWh	0% of battery	15 795 mW	Drain	-	-	23%
154	00:13:33	0:09:39	Screen Off	1 110 mWh	4% of battery	6 894 mW	Drain	-	-	23%
155	00:23:16	0:00:00	Screen Off	-	-	-	Drain	-	-	19%
156	00:23:16	0:00:31	Active	107 mWh	0% of battery	12 419 mW	Drain	-	-	19%
157	00:23:47	0:09:55	Screen Off	866 mWh	3% of battery	5 236 mW	Drain	-	-	18%
158	00:33:46	0:00:00	Screen Off	-	-	-	Drain	-	-	15%
159	00:33:46	0:00:31	Active	91 mWh	0% of battery	10 566 mW	Drain	-	-	15%
160	00:34:17	0:09:55	Screen Off	852 mWh	3% of battery	5 152 mW	Drain	-	-	15%
161	00:44:16	0:00:00	Screen Off	-	-	-	Drain	-	-	12%
162	00:44:16	0:00:31	Active	106 mWh	0% of battery	12 305 mW	Drain	-	-	12%
163	00:44:47	0:09:55	Screen Off	867 mWh	3% of battery	5 243 mW	Drain	-	-	11%
164	00:54:46	0:00:00	Screen Off	-	-	-	Drain	-	-	8%
165	00:54:46	0:00:31	Active	106 mWh	0% of battery	12 299 mW	Drain	-	-	8%
166	00:55:17	0:00:40	Screen Off	107 mWh	0% of battery	9 593 mW	Drain	-	-	8%
167	00:55:58	0:02:38	Screen Off	228 mWh	1% of battery	5 193 mW	Drain	-	-	7%
168	00:58:36	0:00:00	Screen Off	-	-	-	Drain	-	-	7%
169	00:58:36	0:00:31	Active	91 mWh	0% of battery	10 522 mW	Drain	-	-	7%
170	00:59:07	0:09:35	Screen Off	805 mWh	3% of battery	5 036 mW	Drain	-	-	6%
171	01:08:46	0:00:00	Screen Off	-	-	-	Drain	-	-	3%
172	01:08:46	0:00:31	Active	46 mWh	0% of battery	5 337 mW	Drain	-	-	3%
173	01:09:17	0:09:55	Screen Off	456 mWh	2% of battery	2 755 mW	Drain	-	-	3%
174	01:19:13	0:03:18	Sleep	61 mWh	0% of battery	1 108 mW	Drain	SW: 0%	-	2%
175	01:22:30	0:00:00	Screen Off	-	-	-	Drain	-	-	1%
176	01:22:30	0:00:31	Active	61 mWh	0% of battery	7 049 mW	Drain	-	-	1%
177	01:23:02	0:00:00	Screen Off	-	-	-	Drain	-	-	-
178	22:09:50	0:00:00	Abnormal Shutdown	-	-	-	Drain	-	-	-
179	22:10:08	0:09:15	Active	-	-	-	Drain	-	-	-
180	22:19:22	0:00:00	Screen Off	-	-	-	Drain	-	-	100%

	START TIME	DURATION	STATE	ENERGY CHANGE		CHANGE RATE		% LOW POWER STATE TIME	% CAPACITY REMAINING AT START
181	22:19:22	0:00:00	Sleep	-	-	-	Drain	-	100%
182	22:19:23	0:00:00	Screen Off	-	-	-	Charge	-	100%
183	22:19:23	0:00:00	Screen Off	-	-	-	Drain	-	100%
184	22:19:23	0:00:06	Sleep	-	-	-	Drain	-	100%
185	22:19:30	0:00:05	Screen Off	-	-	-	Drain	-	100%
186	22:19:40	10:53:08	Sleep	4 484 mWh	16% of battery	412 mW	Drain	SW: 100% HW: 97%	100%
187	2025-05-02 09:12:41	1:24:53	Hibernate	-	-	-	Drain	-	84%
188	10:37:35	0:00:00	Screen Off	-	-	-	Charge	-	84%
189	10:37:35	0:01:07	Active	-	-	-	Charge	-	84%
190	10:38:42	0:00:00	Report Generated	-	-	-	Charge	-	-

Analysis Results

Analysis of issues that might cause poor battery life

Top

System Power State: Screen Off

	START TIME	DURATION	STATE	ENTRY REASON	EXIT REASON	% CAPACITY REMAINING AT START
1	2025-04-25 09:57:40	0:00:10	Screen Off	Unknown	Transition To Sleep	100%

+ Detailed Session Information

Srum Data

Data obtained from the SRUM database. * in Power Estimation means the power value is from energy meter. Otherwise, it is from software model estimation.

+ Energy Meter

+ Power Estimation

This session contains no detailed information about top offenders.

Top

System Power State: Sleep

	START TIME	DURATION	STATE	ENTRY REASON	EXIT REASON	% CAPACITY REMAINING AT START
2	2025-04-25 09:57:51	1:53:01	Sleep	Transition To Sleep	PDC Task Client: Maintenance Scheduler	100%

+ Detailed Session Information

Srum Data

Data obtained from the SRUM database. * in Power Estimation means the power value is from energy meter. Otherwise, it is from software model estimation.

+ Energy Meter

+ Power Estimation

This session contains no detailed information about top offenders.

Top

System Power State: Screen Off

	START TIME	DURATION	STATE	ENTRY REASON	EXIT REASON	% CAPACITY REMAINING AT START
3	2025-04-25 11:50:52	0:00:00	Screen Off	PDC Task Client: Maintenance Scheduler	Transition To Sleep	100%

+ Detailed Session Information

This session contains no detailed information about top offenders.

Top

System Power State: Sleep

	START TIME	DURATION	STATE	ENTRY REASON	EXIT REASON	% CAPACITY REMAINING AT START
4	2025-04-25 11:50:53	0:00:00	Sleep	Transition To Sleep	PDC Task Client: Maintenance Scheduler	100%

+ Detailed Session Information

This session contains no detailed information about top offenders.

Top

System Power State: Screen Off

	START TIME	DURATION	STATE	ENTRY REASON	EXIT REASON	% CAPACITY REMAINING AT START
5	2025-04-25 11:50:53	0:00:36	Screen Off	PDC Task Client: Maintenance Scheduler	Transition To Sleep	100%

+ Detailed Session Information

Srum Data

Data obtained from the SRUM database. * in Power Estimation means the power value is from energy meter. Otherwise, it is from software model estimation.

+ Energy Meter

+ Power Estimation

This session contains no detailed information about top offenders.

Top

System Power State: Sleep

	START TIME	DURATION	STATE	ENTRY REASON	EXIT REASON	% CAPACITY REMAINING AT START
6	2025-04-25 11:51:29	0:00:01	Sleep	Transition To Sleep	PDC Task Client: Maintenance Scheduler	100%

+ Detailed Session Information

Srum Data

Data obtained from the SRUM database. * in Power Estimation means the power value is from energy meter. Otherwise, it is from software model estimation.

+ Energy Meter

+ Power Estimation

This session contains no detailed information about top offenders.

Top

System Power State: Screen Off

	START TIME	DURATION	STATE	ENTRY REASON	EXIT REASON	% CAPACITY REMAINING AT START
7	2025-04-25 11:51:30	0:00:01	Screen Off	PDC Task Client: Maintenance Scheduler	Transition To Sleep	100%

+ Detailed Session Information

Srum Data

Data obtained from the SRUM database. * in Power Estimation means the power value is from energy meter. Otherwise, it is from software model estimation.

+ Energy Meter

+ Power Estimation

This session contains no detailed information about top offenders.

Top

System Power State: Sleep

	START TIME	DURATION	STATE	ENTRY REASON	EXIT REASON	% CAPACITY REMAINING AT START
8	2025-04-25 11:51:32	0:00:08	Sleep	Transition To Sleep	Input Mouse	100%

+ Detailed Session Information

Srum Data

Data obtained from the SRUM database. * in Power Estimation means the power value is from energy meter. Otherwise, it is from software model estimation.

+ Energy Meter

+ Power Estimation

This session contains no detailed information about top offenders.

Top

System Power State: Active

	START TIME	DURATION	STATE	ENTRY REASON	EXIT REASON	% CAPACITY REMAINING AT START
9	2025-04-25 11:51:40	1:45:15	Active	----	----	100%

+ Detailed Session Information

Srum Data

Data obtained from the SRUM database. * in Power Estimation means the power value is from energy meter. Otherwise, it is from software model estimation.

+ Energy Meter

+ Power Estimation

Top

System Power State: Screen Off

	START TIME	DURATION	STATE	ENERGY CHANGE		CHANGE RATE		% LOW POWER STATE TIME		% CAPACITY REMAINING AT START
10	2025-04-25 13:36:54	0:09:51	Screen Off	-	-	-	Charge	-	-	100%

+ Detailed Session Information

Top Offenders

Top 5 Offenders, ranked by active time

NAME	TYPE	% ACTIVE TIME	ACTIVE TIME
No CS Phase	PDC Phase	100%	0:09:51

+ PDC Phases

Srum Data

Data obtained from the SRUM database. * in Power Estimation means the power value is from energy meter. Otherwise, it is from software model estimation.

+ Energy Meter

+ Power Estimation

Top

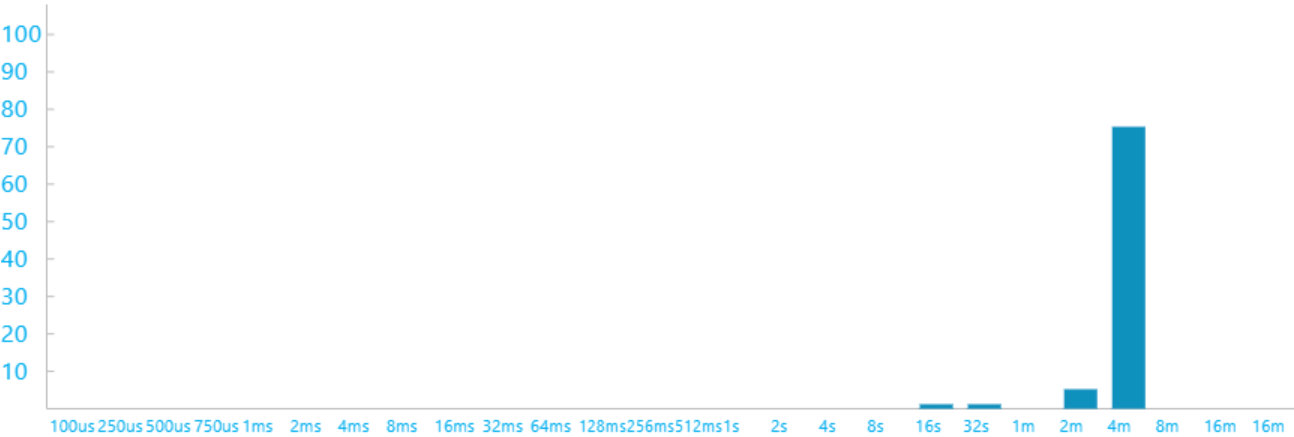
System Power State: Sleep

	START TIME	DURATION	STATE	ENERGY CHANGE		CHANGE RATE		% LOW POWER STATE TIME		% CAPACITY REMAINING AT START
11	2025-04-25 13:46:45	1:05:29	Sleep	-	-	-	Charge	SW: 95%	HW: 91%	100%

+ Detailed Session Information

DRIPS Histogram

Percent of time spent in DRIPS bucketed by time interval length



Top Offenders

Top 5 Offenders, ranked by active time

NAME	TYPE	% ACTIVE TIME	ACTIVE TIME
Intel Smart Sound Technology BUS (_SB.PC00.HDAS)	Fx Device	2%	0:01:43
USB xHCI-kompatibel vrdstyrenhet (_SB.PC00.XHCI)	Fx Device	1%	0:00:51
BI	Activator	0%	0:00:31
Intel(R) Wi-Fi 6 AX201 160MHz (_SB.PC00.CNVW)	Fx Device	0%	0:00:25
WNS	Activator	0%	0:00:06

+ PDC Phases

+ Activators

- + FX Devices
- + Processors
- + PEP Pre-Vetoes
- + SOC Subsystems

Srum Data
Data obtained from the SRUM database. * in Power Estimation means the power value is from energy meter. Otherwise, it is from software model estimation.

- + Energy Meter
- + Power Estimation

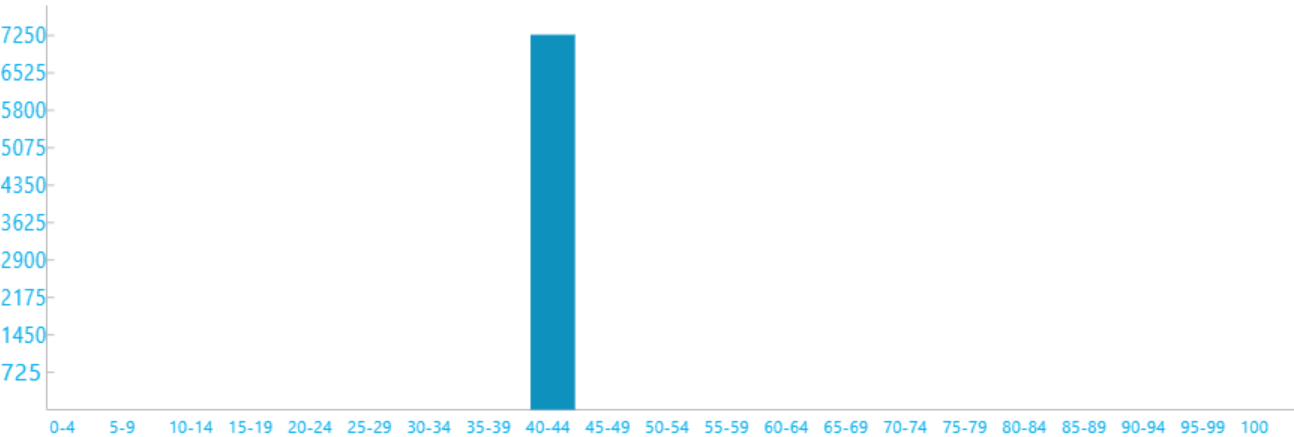
Top

System Power State: Active

	START TIME	DURATION	STATE	ENTRY REASON	EXIT REASON	% CAPACITY REMAINING AT START
12	2025-04-25 14:52:18	2:00:52	Active	MonitorOn	MonitorOff	100%

- + Detailed Session Information

Screen Brightness Duration Histogram
Duration in seconds at various screen brightness levels



Search Indexer Data

- + Query Events:
- + Indexing File Events:

Srum Data
Data obtained from the SRUM database. * in Power Estimation means the power value is from energy meter. Otherwise, it is from software model estimation.

- + Energy Meter
- + Power Estimation

Top

System Power State: Screen Off

	START TIME	DURATION	STATE	ENERGY CHANGE	CHANGE RATE	% LOW POWER STATE TIME	% CAPACITY REMAINING AT START
13	2025-04-25 16:53:09	0:09:38	Screen Off	- -	- Charge	-	100%

+ Detailed Session Information

Top Offenders

Top 5 Offenders, ranked by active time

NAME	TYPE	% ACTIVE TIME	ACTIVE TIME
No CS Phase	PDC Phase	100%	0:09:39

+ PDC Phases

Srum Data

Data obtained from the SRUM database. * in Power Estimation means the power value is from energy meter. Otherwise, it is from software model estimation.

+ Energy Meter

+ Power Estimation

Top

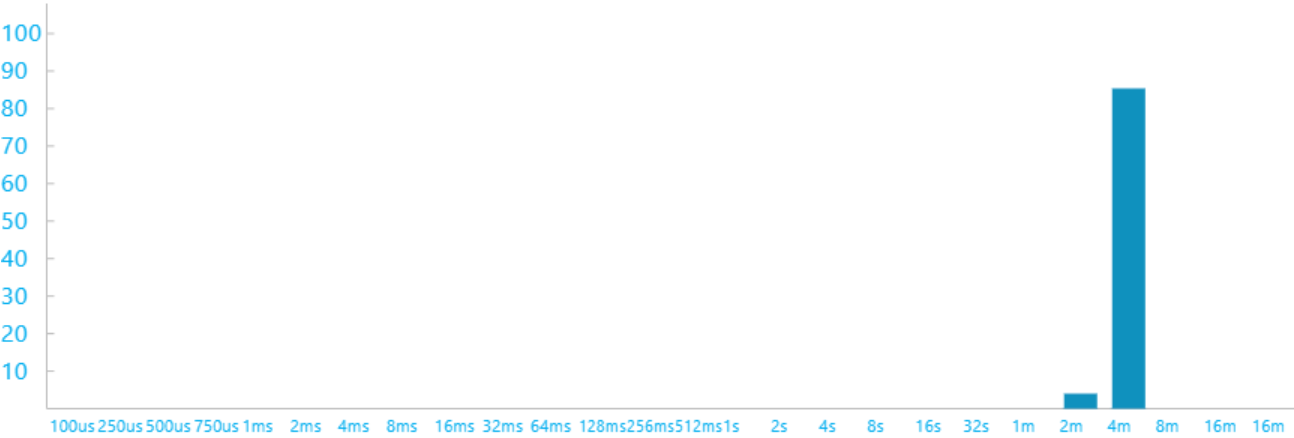
System Power State: Sleep

	START TIME	DURATION	STATE	ENERGY CHANGE		CHANGE RATE	% LOW POWER STATE TIME		% CAPACITY REMAINING AT START
							SW:	HW:	
14	2025-04-25 17:02:48	1:30:51	Sleep	-	-	- Charge	98%	94%	100%

+ Detailed Session Information

DRIPS Histogram

Percent of time spent in DRIPS bucketed by time interval length



Top Offenders

Top 5 Offenders, ranked by active time

NAME	TYPE	% ACTIVE TIME	ACTIVE TIME
BI	Activator	1%	0:01:01
Intel(R) Wi-Fi 6 AX201 160MHz (_SB.PC00.CNVW)	Fx Device	0%	0:00:29
WNS	Activator	0%	0:00:09
Low Power Phase	PDC Phase	0%	0:00:05
Update Orchestrator Client	Activator	0%	0:00:02

+ PDC Phases

+ Activators

+ FX Devices

+ Processors

+ PEP Pre-Vetoes

+ SOC Subsystems

Srum Data

Data obtained from the SRUM database. * in Power Estimation means the power value is from energy meter. Otherwise, it is from software model estimation.

+ Energy Meter

+ Power Estimation



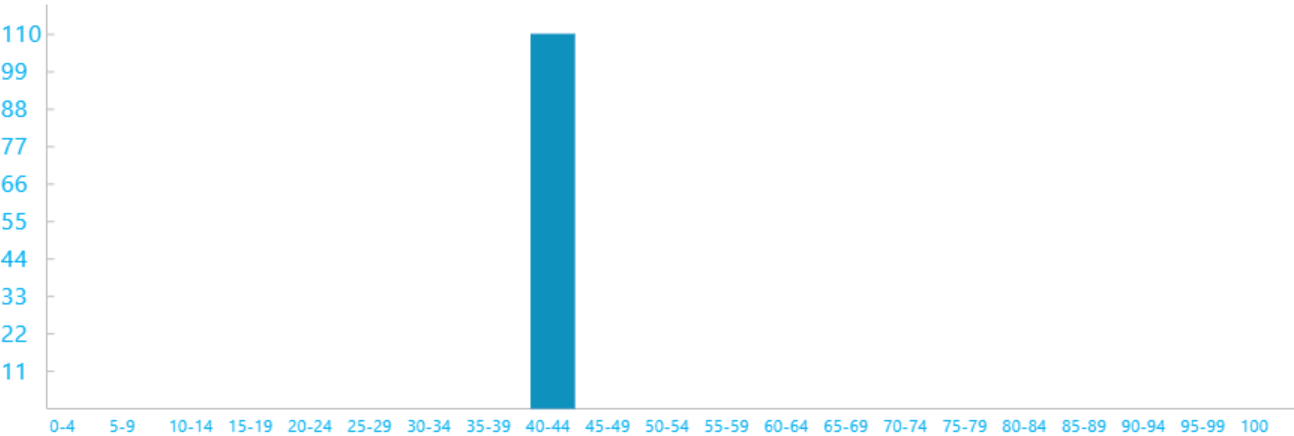
System Power State: Active

	START TIME	DURATION	STATE	ENTRY REASON	EXIT REASON	% CAPACITY REMAINING AT START
15	2025-04-25 18:33:39	0:01:56	Active	MonitorOn	MonitorOff	100%

+ Detailed Session Information

Screen Brightness Duration Histogram

Duration in seconds at various screen brightness levels



Search Indexer Data

+ Indexing File Events:

Srum Data

Data obtained from the SRUM database. * in Power Estimation means the power value is from energy meter. Otherwise, it is from software model estimation.

+ Energy Meter

+ Power Estimation



System Power State: Screen Off

	START TIME	DURATION	STATE	ENTRY REASON	EXIT REASON	% CAPACITY REMAINING AT START
16	2025-04-25 18:35:33	0:00:06	Screen Off	Power Button	Input Keyboard	100%

+ Detailed Session Information

Srum Data

Data obtained from the SRUM database. * in Power Estimation means the power value is from energy meter. Otherwise, it is from software model estimation.

+ Energy Meter

+ Power Estimation

This session contains no detailed information about top offenders.

Top

System Power State: Active

	START TIME	DURATION	STATE	ENTRY REASON	EXIT REASON	% CAPACITY REMAINING AT START
17	2025-04-25 18:35:40	0:00:08	Active	----	----	100%

+ Detailed Session Information

Srum Data

Data obtained from the SRUM database. * in Power Estimation means the power value is from energy meter. Otherwise, it is from software model estimation.

+ Energy Meter

+ Power Estimation

Top

System Power State: Screen Off

	START TIME	DURATION	STATE	ENTRY REASON	EXIT REASON	% CAPACITY REMAINING AT START
18	2025-04-25 18:35:48	0:00:01	Screen Off	Power Button	Transition To Sleep	100%

+ Detailed Session Information

Srum Data

Data obtained from the SRUM database. * in Power Estimation means the power value is from energy meter. Otherwise, it is from software model estimation.

+ Energy Meter

+ Power Estimation

This session contains no detailed information about top offenders.

Top

System Power State: Sleep

	START TIME	DURATION	STATE	ENERGY CHANGE	CHANGE RATE	% LOW POWER STATE TIME		% CAPACITY REMAINING AT START
19	2025-04-25 18:35:49	0:16:40	Sleep	- -	- Charge	SW: 98%	HW: 93%	100%

+ Detailed Session Information

DRIPS Histogram

Percent of time spent in DRIPS bucketed by time interval length



Top Offenders
Top 5 Offenders, ranked by active time

NAME	TYPE	% ACTIVE TIME	ACTIVE TIME
Low Power Phase	PDC Phase	0%	0:00:05
Intel(R) Wi-Fi 6 AX201 160MHz (_SB.PC00.CNVW)	Fx Device	0%	0:00:04
Update Orchestrator Client	Activator	0%	0:00:02
WNS	Activator	0%	0:00:01

+ PDC Phases

+ Activators

+ FX Devices

+ Processors

+ PEP Pre-Vetoes

+ SOC Subsystems

Srum Data
Data obtained from the SRUM database. * in Power Estimation means the power value is from energy meter. Otherwise, it is from software model estimation.

+ Energy Meter

+ Power Estimation

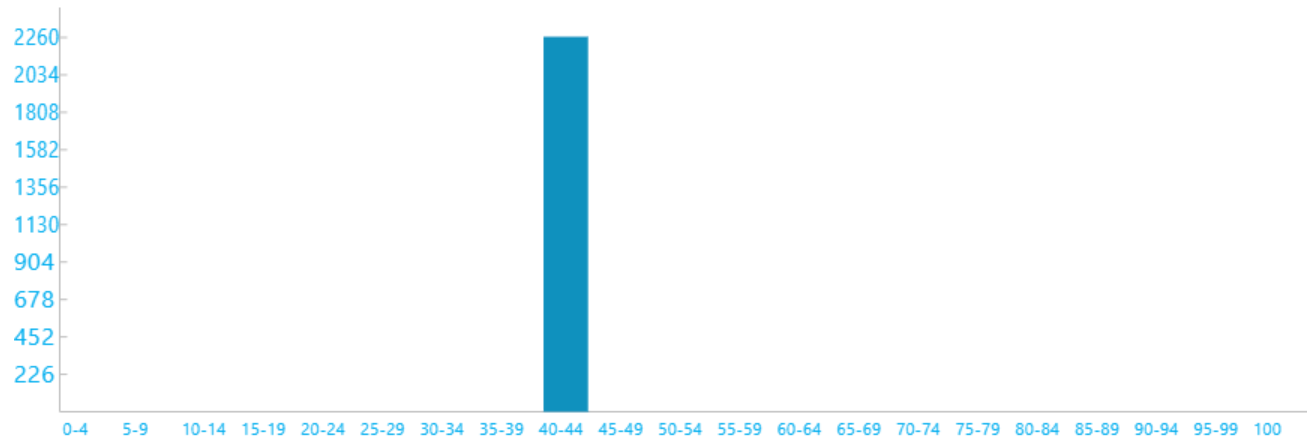
Top

System Power State: Active

	START TIME	DURATION	STATE	ENTRY REASON	EXIT REASON	% CAPACITY REMAINING AT START
20	2025-04-25 18:52:24	0:37:41	Active	MonitorOn	MonitorOff	100%

+ Detailed Session Information

Screen Brightness Duration Histogram
Duration in seconds at various screen brightness levels



Search Indexer Data

+ Indexing File Events:

Srum Data

Data obtained from the SRUM database. * in Power Estimation means the power value is from energy meter. Otherwise, it is from software model estimation.

+ Energy Meter

+ Power Estimation

Top

System Power State: Screen Off

	START TIME	DURATION	STATE	ENTRY REASON	EXIT REASON	% CAPACITY REMAINING AT START
21	2025-04-25 19:30:03	0:00:02	Screen Off	Power Button	Transition To Sleep	100%

+ Detailed Session Information

Srum Data

Data obtained from the SRUM database. * in Power Estimation means the power value is from energy meter. Otherwise, it is from software model estimation.

+ Energy Meter

+ Power Estimation

This session contains no detailed information about top offenders.

Top

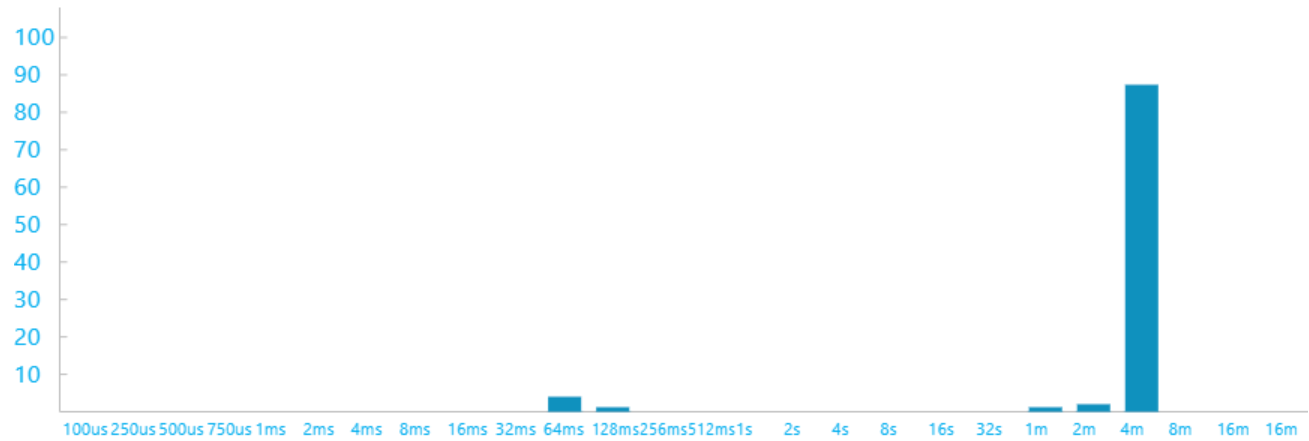
System Power State: Sleep

	START TIME	DURATION	STATE	ENERGY CHANGE	CHANGE RATE	% LOW POWER STATE TIME		% CAPACITY REMAINING AT START
22	2025-04-25 19:30:05	9:14:21	Sleep	- -	- Charge	SW: 95%	HW: 90%	100%

+ Detailed Session Information

DRIPS Histogram

Percent of time spent in DRIPS bucketed by time interval length



Top Offenders
Top 5 Offenders, ranked by active time

NAME	TYPE	% ACTIVE TIME	ACTIVE TIME
BI	Activator	8%	0:45:44
Intel(R) Wi-Fi 6 AX201 160MHz (_SB.PC00.CNVW)	Fx Device	0%	0:03:43
Update Orchestrator Client	Activator	0%	0:02:08
WU	Activator	0%	0:01:52
WNS	Activator	0%	0:01:12

- + PDC Phases
- + Activators
- + FX Devices
- + Processors
- + PEP Pre-Vetoes
- + SOC Subsystems

Srum Data
Data obtained from the SRUM database. * in Power Estimation means the power value is from energy meter. Otherwise, it is from software model estimation.

- + Energy Meter
- + Power Estimation

Top

System Power State: Screen Off

	START TIME	DURATION	STATE	ENTRY REASON	EXIT REASON	% CAPACITY REMAINING AT START
23	2025-04-26 04:44:21	0:00:58	Screen Off	PDC Task Client: Maintenance Scheduler	Transition To Sleep	100%

- + Detailed Session Information

Srum Data
Data obtained from the SRUM database. * in Power Estimation means the power value is from energy meter. Otherwise, it is from software model estimation.

- + Energy Meter

+ Power Estimation

This session contains no detailed information about top offenders.

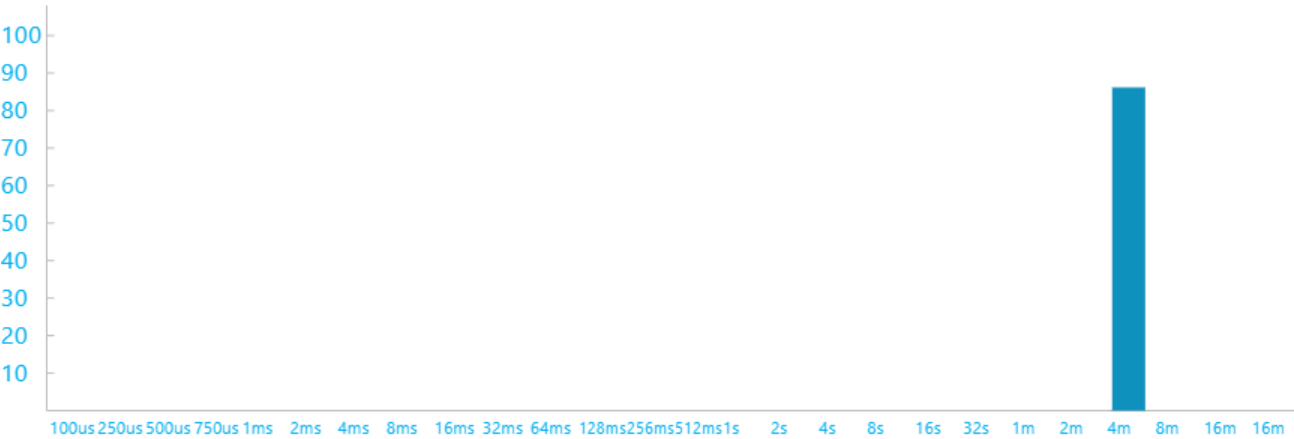
Top

System Power State: Sleep

	START TIME	DURATION	STATE	ENERGY CHANGE		CHANGE RATE	% LOW POWER STATE TIME		% CAPACITY REMAINING AT START
24	2025-04-26 04:45:24	4:40:29	Sleep	-	-	- Charge	SW: 88%	HW: 84%	100%

+ Detailed Session Information

DRIPS Histogram
Percent of time spent in DRIPS bucketed by time interval length



Top Offenders
Top 5 Offenders, ranked by active time

NAME	TYPE	% ACTIVE TIME	ACTIVE TIME
Update Orchestrator Client	Activator	10%	0:30:02
Intel(R) Wi-Fi 6 AX201 160MHz (_SB.PC00.CNVW)	Fx Device	0%	0:01:37
BI	Activator	0%	0:01:34
WNS	Activator	0%	0:00:30
Low Power Phase	PDC Phase	0%	0:00:05

+ PDC Phases

+ Activators

+ FX Devices

+ Processors

+ PEP Pre-Vetoes

+ SOC Subsystems

Srum Data
Data obtained from the SRUM database. * in Power Estimation means the power value is from energy meter. Otherwise, it is from software model estimation.

+ Energy Meter

+ Power Estimation

Top

System Power State: Active

	START TIME	DURATION	STATE	ENTRY REASON	EXIT REASON	% CAPACITY REMAINING AT START
25	2025-04-26 09:25:44	0:00:52	Active	----	----	100%

+ Detailed Session Information

Srum Data
Data obtained from the SRUM database. * in Power Estimation means the power value is from energy meter. Otherwise, it is from software model estimation.

+ Energy Meter

+ Power Estimation

Top

System Power State: Screen Off

	START TIME	DURATION	STATE	ENTRY REASON	EXIT REASON	% CAPACITY REMAINING AT START
26	2025-04-26 09:26:36	0:00:00	Screen Off	Lid	Transition To Sleep	94%

+ Detailed Session Information

This session contains no detailed information about top offenders.

Top

System Power State: Sleep

	START TIME	DURATION	STATE	ENTRY REASON	EXIT REASON	% CAPACITY REMAINING AT START
27	2025-04-26 09:26:37	0:00:00	Sleep	Transition To Sleep	Input Keyboard	94%

+ Detailed Session Information

This session contains no detailed information about top offenders.

Top

System Power State: Active

	START TIME	DURATION	STATE	ENTRY REASON	EXIT REASON	% CAPACITY REMAINING AT START
28	2025-04-26 09:26:37	0:00:13	Active	----	----	94%

+ Detailed Session Information

Srum Data
Data obtained from the SRUM database. * in Power Estimation means the power value is from energy meter. Otherwise, it is from software model estimation.

+ Energy Meter

+ Power Estimation

Top

System Power State: Screen Off

	START TIME	DURATION	STATE	ENTRY REASON	EXIT REASON	% CAPACITY REMAINING AT START
29	2025-04-26 09:26:51	0:00:00	Screen Off	Lid	Transition To Sleep	94%

+ Detailed Session Information

This session contains no detailed information about top offenders.

Top

System Power State: Sleep

	START TIME	DURATION	STATE	ENTRY REASON	EXIT REASON	% CAPACITY REMAINING AT START
30	2025-04-26 09:26:51	0:00:27	Sleep	Transition To Sleep	Lid	94%

+ Detailed Session Information

Srum Data

Data obtained from the SRUM database. * in Power Estimation means the power value is from energy meter. Otherwise, it is from software model estimation.

+ Energy Meter

+ Power Estimation

This session contains no detailed information about top offenders.

Top

System Power State: Active

	START TIME	DURATION	STATE	ENTRY REASON	EXIT REASON	% CAPACITY REMAINING AT START
31	2025-04-26 09:27:18	0:00:04	Active	----	----	94%

+ Detailed Session Information

Srum Data

Data obtained from the SRUM database. * in Power Estimation means the power value is from energy meter. Otherwise, it is from software model estimation.

+ Energy Meter

+ Power Estimation

Top

System Power State: Screen Off

	START TIME	DURATION	STATE	ENTRY REASON	EXIT REASON	% CAPACITY REMAINING AT START
32	2025-04-26 09:27:23	0:00:00	Screen Off	Lid	Transition To Sleep	94%

+ Detailed Session Information

This session contains no detailed information about top offenders.

Top

System Power State: Sleep

	START TIME	DURATION	STATE	ENTRY REASON	EXIT REASON	% CAPACITY REMAINING AT START
33	2025-04-26 09:27:23	0:00:01	Sleep	Transition To Sleep	Input Keyboard	94%

+ Detailed Session Information

Srum Data

Data obtained from the SRUM database. * in Power Estimation means the power value is from energy meter. Otherwise, it is from software model estimation.

+ Energy Meter

+ Power Estimation

This session contains no detailed information about top offenders.

Top

System Power State: Active

	START TIME	DURATION	STATE	ENTRY REASON	EXIT REASON	% CAPACITY REMAINING AT START
34	2025-04-26 09:27:24	0:00:31	Active	----	----	94%

+ Detailed Session Information

Srum Data

Data obtained from the SRUM database. * in Power Estimation means the power value is from energy meter. Otherwise, it is from software model estimation.

+ Energy Meter

+ Power Estimation

Top

System Power State: Screen Off

	START TIME	DURATION	STATE	ENERGY CHANGE	CHANGE RATE	% LOW POWER STATE TIME	% CAPACITY REMAINING AT START
35	2025-04-26 09:27:55	33:10:15	Screen Off	- -	- Charge	-	94%

+ Detailed Session Information

Top Offenders

Top 5 Offenders, ranked by active time

NAME	TYPE	% ACTIVE TIME	ACTIVE TIME
No CS Phase	PDC Phase	99%	33:10:14

+ PDC Phases

Srum Data

Data obtained from the SRUM database. * in Power Estimation means the power value is from energy meter. Otherwise, it is from software model estimation.

+ Energy Meter

+ Power Estimation

Top

System Power State: Sleep

	START TIME	DURATION	STATE	ENERGY CHANGE	CHANGE RATE	% LOW POWER STATE TIME	% CAPACITY REMAINING AT START
36	2025-04-27 18:38:10	9:28:23	Sleep	- -	- Charge	SW: 88% HW: 84%	100%

+ Detailed Session Information

DRIPS Histogram

Percent of time spent in DRIPS bucketed by time interval length



Top Offenders

Top 5 Offenders, ranked by active time

NAME	TYPE	% ACTIVE TIME	ACTIVE TIME
Update Orchestrator Client	Activator	10%	1:00:07
Intel(R) Wi-Fi 6 AX201 160MHz (_SB.PC00.CNVW)	Fx Device	0%	0:04:08
BI	Activator	0%	0:03:36
WNS	Activator	0%	0:01:24
USB xHCI-kompatibel vrdstyrenhet (_SB.PC00.XHCI)	Fx Device	0%	0:01:12

+ PDC Phases

+ Activators

+ FX Devices

+ Processors

+ PEP Pre-Vetoes

+ SOC Subsystems

Srum Data

Data obtained from the SRUM database. * in Power Estimation means the power value is from energy meter. Otherwise, it is from software model estimation.

+ Energy Meter

+ Power Estimation

Top

System Power State: Screen Off

	START TIME	DURATION	STATE	ENTRY REASON	EXIT REASON	% CAPACITY REMAINING AT START
37	2025-04-28 04:06:27	0:00:00	Screen Off	PDC Task Client: Maintenance Scheduler	Transition To Sleep	100%

+ Detailed Session Information

This session contains no detailed information about top offenders.

Top

System Power State: Sleep

	START TIME	DURATION	STATE	ENERGY CHANGE	CHANGE RATE	% LOW POWER STATE TIME		% CAPACITY REMAINING AT START
38	2025-04-28 04:06:33	3:46:00	Sleep	- -	Charge	SW: 85%	HW: 79%	100%

+ Detailed Session Information

DRIPS Histogram
Percent of time spent in DRIPS bucketed by time interval length



Top Offenders
Top 5 Offenders, ranked by active time

NAME	TYPE	% ACTIVE TIME	ACTIVE TIME
Update Orchestrator Client	Activator	13%	0:30:04
BI	Activator	1%	0:02:47
Intel(R) Wi-Fi 6 AX201 160MHz (_SB.PC00.CNVW)	Fx Device	0%	0:01:13
USB xHCI-kompatibel vrdstyrenhet (_SB.PC00.XHCI)	Fx Device	0%	0:00:45
Intel(R) PCI Express Root Port #7 - A0BE (_SB.PC00.RP07)	Fx Device	0%	0:00:39

+ PDC Phases

+ Activators

+ FX Devices

+ Processors

+ PEP Pre-Vetoes

+ SOC Subsystems

Srum Data
Data obtained from the SRUM database. * in Power Estimation means the power value is from energy meter. Otherwise, it is from software model estimation.

+ Energy Meter

+ Power Estimation

Top

System Power State: Active

	START TIME	DURATION	STATE	ENTRY REASON	EXIT REASON	% CAPACITY REMAINING AT START
39	2025-04-28 07:52:24	0:00:39	Active	----	----	100%

+ Detailed Session Information

Srum Data

Data obtained from the SRUM database. * in Power Estimation means the power value is from energy meter. Otherwise, it is from software model estimation.

+ Energy Meter

+ Power Estimation

Top

System Power State: Screen Off

	START TIME	DURATION	STATE	ENERGY CHANGE		CHANGE RATE	% LOW POWER STATE TIME		% CAPACITY REMAINING AT START
40	2025-04-28 07:53:03	0:09:50	Screen Off	-	-	- Charge	-	-	100%

+ Detailed Session Information

Top Offenders

Top 5 Offenders, ranked by active time

NAME	TYPE	% ACTIVE TIME	ACTIVE TIME
No CS Phase	PDC Phase	100%	0:09:50

+ PDC Phases

Srum Data

Data obtained from the SRUM database. * in Power Estimation means the power value is from energy meter. Otherwise, it is from software model estimation.

+ Energy Meter

+ Power Estimation

Top

System Power State: Sleep

	START TIME	DURATION	STATE	ENERGY CHANGE		CHANGE RATE	% LOW POWER STATE TIME		% CAPACITY REMAINING AT START
41	2025-04-28 08:02:53	0:12:13	Sleep	-	-	- Charge	SW: 97%	HW: 92%	100%

+ Detailed Session Information

DRIPS Histogram

Percent of time spent in DRIPS bucketed by time interval length



Top Offenders

Top 5 Offenders, ranked by active time

NAME	TYPE	% ACTIVE TIME	ACTIVE TIME
Host Activity Manager	Activator	0%	0:00:05
Low Power Phase	PDC Phase	0%	0:00:05
Intel(R) Wi-Fi 6 AX201 160MHz (_SB.PC00.CNVW)	Fx Device	0%	0:00:05
WNS	Activator	0%	0:00:01

+ PDC Phases

+ Activators

+ FX Devices

+ Processors

+ PEP Pre-Vetoes

+ SOC Subsystems

Srum Data
Data obtained from the SRUM database. * in Power Estimation means the power value is from energy meter. Otherwise, it is from software model estimation.

+ Energy Meter

+ Power Estimation

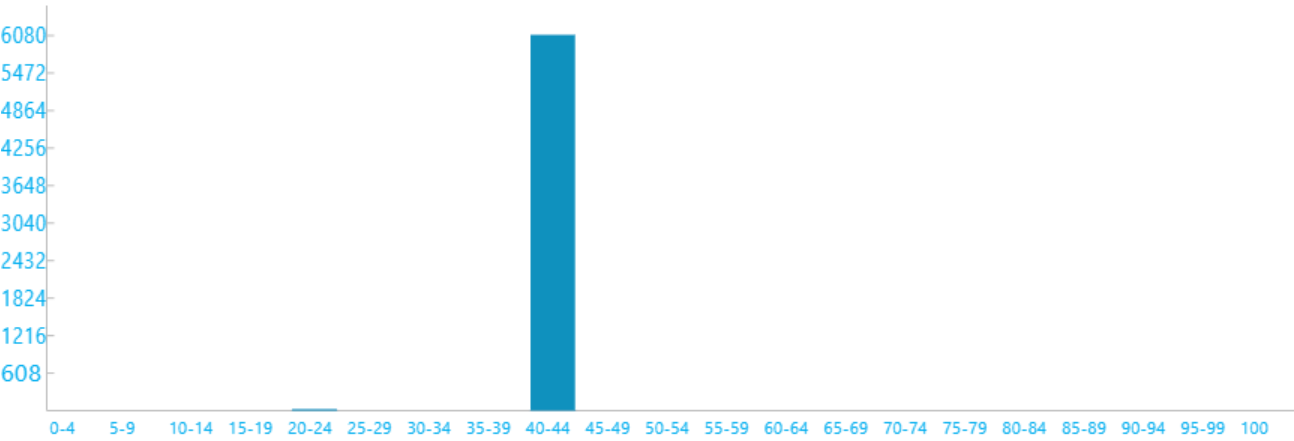
Top

System Power State: Active

	START TIME	DURATION	STATE	ENTRY REASON	EXIT REASON	% CAPACITY REMAINING AT START
42	2025-04-28 08:15:03	1:41:35	Active	MonitorOn	MonitorOff	100%

+ Detailed Session Information

Screen Brightness Duration Histogram
Duration in seconds at various screen brightness levels



Search Indexer Data

+ Query Events:

+ Indexing File Events:

Srum Data
Data obtained from the SRUM database. * in Power Estimation means the power value is from energy meter. Otherwise, it is from software model estimation.

+ Energy Meter

+ Power Estimation

Top

System Power State: Screen Off

	START TIME	DURATION	STATE	ENTRY REASON	EXIT REASON	% CAPACITY REMAINING AT START
43	2025-04-28 09:56:36	0:00:17	Screen Off	Video Idle Timeout	Transition To Sleep	100%

+ Detailed Session Information

Srum Data
Data obtained from the SRUM database. * in Power Estimation means the power value is from energy meter. Otherwise, it is from software model estimation.

+ Energy Meter

+ Power Estimation

This session contains no detailed information about top offenders.

Top

System Power State: Sleep

	START TIME	DURATION	STATE	ENTRY REASON	EXIT REASON	% CAPACITY REMAINING AT START
44	2025-04-28 09:56:54	0:01:57	Sleep	Transition To Sleep	Input Mouse	100%

+ Detailed Session Information

Srum Data
Data obtained from the SRUM database. * in Power Estimation means the power value is from energy meter. Otherwise, it is from software model estimation.

+ Energy Meter

+ Power Estimation

This session contains no detailed information about top offenders.

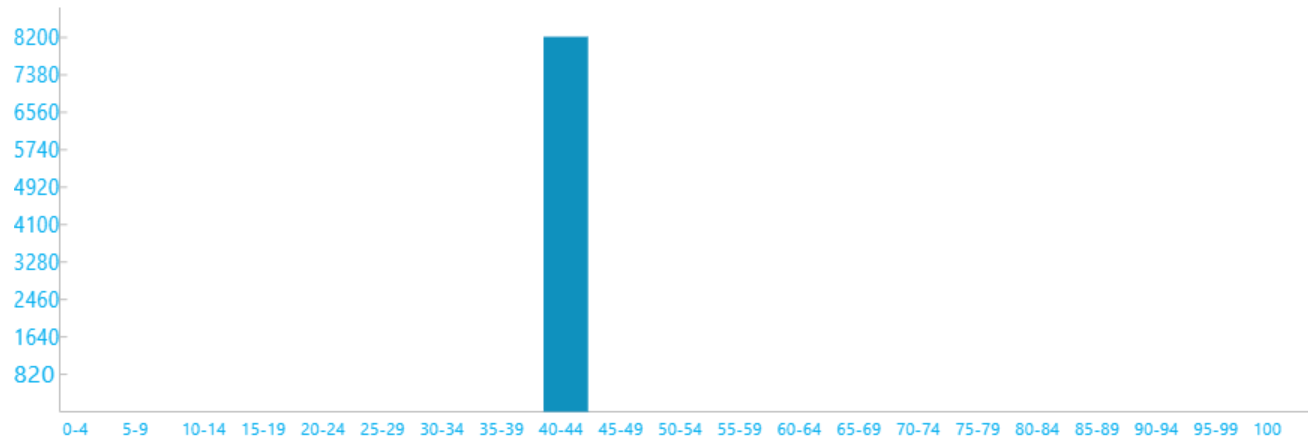
Top

System Power State: Active

	START TIME	DURATION	STATE	ENTRY REASON	EXIT REASON	% CAPACITY REMAINING AT START
45	2025-04-28 09:58:54	2:16:38	Active	MonitorOn	MonitorOff	100%

+ Detailed Session Information

Screen Brightness Duration Histogram
Duration in seconds at various screen brightness levels



Search Indexer Data

- + Query Events:
- + Indexing File Events:

Srum Data
Data obtained from the SRUM database. * in Power Estimation means the power value is from energy meter. Otherwise, it is from software model estimation.

- + Energy Meter
- + Power Estimation

Top

System Power State: Screen Off

	START TIME	DURATION	STATE	ENTRY REASON	EXIT REASON	% CAPACITY REMAINING AT START
46	2025-04-28 12:15:30	0:00:15	Screen Off	Video Idle Timeout	AC/DC Display Burst Suppressed	100%

- + Detailed Session Information

Srum Data
Data obtained from the SRUM database. * in Power Estimation means the power value is from energy meter. Otherwise, it is from software model estimation.

- + Energy Meter
- + Power Estimation

This session contains no detailed information about top offenders.

Top

System Power State: Screen Off

	START TIME	DURATION	STATE	ENTRY REASON	EXIT REASON	% CAPACITY REMAINING AT START
47	2025-04-28 12:15:46	0:00:03	Screen Off	AC/DC Display Burst Suppressed	Input Touchpad	99%

- + Detailed Session Information

Srum Data
Data obtained from the SRUM database. * in Power Estimation means the power value is from energy meter. Otherwise, it is from software model estimation.

- + Energy Meter

+ Power Estimation

This session contains no detailed information about top offenders.

Top

System Power State: Active

	START TIME	DURATION	STATE	ENTRY REASON	EXIT REASON	% CAPACITY REMAINING AT START
48	2025-04-28 12:15:50	0:00:09	Active	----	----	99%

+ Detailed Session Information

Srum Data

Data obtained from the SRUM database. * in Power Estimation means the power value is from energy meter. Otherwise, it is from software model estimation.

+ Energy Meter

+ Power Estimation

Top

System Power State: Screen Off

	START TIME	DURATION	STATE	ENTRY REASON	EXIT REASON	% CAPACITY REMAINING AT START
49	2025-04-28 12:15:59	0:00:00	Screen Off	Screen Off Request	Transition To Sleep	99%

+ Detailed Session Information

This session contains no detailed information about top offenders.

Top

System Power State: Sleep

	START TIME	DURATION	STATE	ENTRY REASON	EXIT REASON	% CAPACITY REMAINING AT START
50	2025-04-28 12:15:59	0:00:10	Sleep	Transition To Sleep	Lid	99%

+ Detailed Session Information

Srum Data

Data obtained from the SRUM database. * in Power Estimation means the power value is from energy meter. Otherwise, it is from software model estimation.

+ Energy Meter

+ Power Estimation

This session contains no detailed information about top offenders.

Top

System Power State: Screen Off

	START TIME	DURATION	STATE	ENTRY REASON	EXIT REASON	% CAPACITY REMAINING AT START
51	2025-04-28 12:16:10	0:00:05	Screen Off	Lid	Transition To Sleep	99%

+ Detailed Session Information

Srum Data

Data obtained from the SRUM database. * in Power Estimation means the power value is from energy meter. Otherwise, it is from software model estimation.

+ Energy Meter

+ Power Estimation

This session contains no detailed information about top offenders.

Top

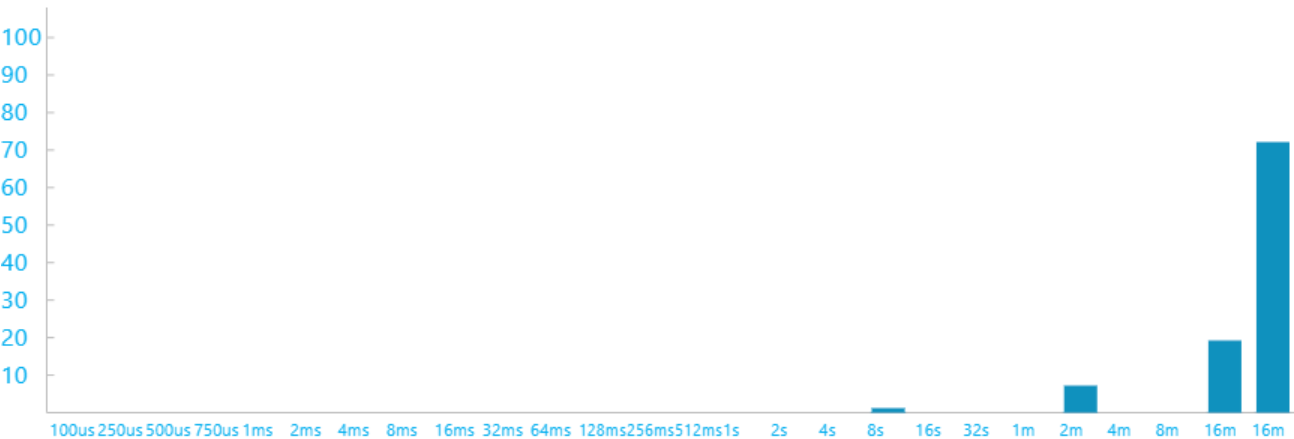
System Power State: Sleep

	START TIME	DURATION	STATE	ENERGY CHANGE	CHANGE RATE	% LOW POWER STATE TIME	% CAPACITY REMAINING AT START
52	2025-04-28 12:16:20	0:58:17	Sleep	425 2% of mWh battery	437 mW Drain	SW: 99% HW: 95%	99%

+ Detailed Session Information

DRIPS Histogram

Percent of time spent in DRIPS bucketed by time interval length



Top Offenders

Top 5 Offenders, ranked by active time

NAME	TYPE	% ACTIVE TIME	ACTIVE TIME
DHCP	Activator	0%	0:00:15
Intel(R) Wi-Fi 6 AX201 160MHz (_SB.PC00.CNVW)	Fx Device	0%	0:00:12
TCPIP	Activator	0%	0:00:06
Low Power Phase	PDC Phase	0%	0:00:05
PDC Suspend/Resume and Network-Refresh Activator	Activator	0%	0:00:02

+ PDC Phases

+ Activators

+ FX Devices

+ Processors

+ PEP Pre-Vetoes

+ SOC Subsystems

Srum Data

Data obtained from the SRUM database. * in Power Estimation means the power value is from energy meter. Otherwise, it is from software model estimation.

+ Energy Meter

+ Power Estimation

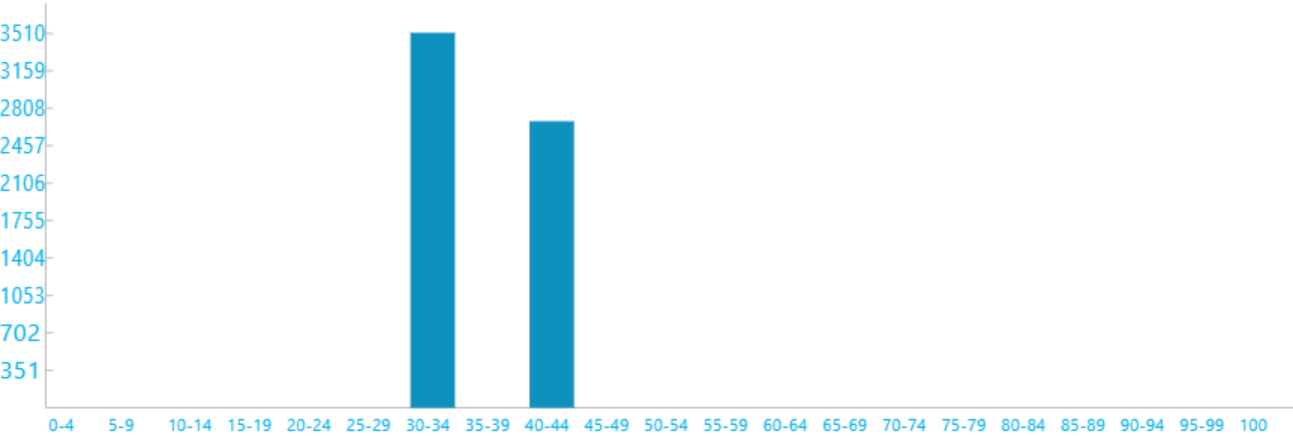
Top

System Power State: Active

	START TIME	DURATION	STATE	ENTRY REASON	EXIT REASON	% CAPACITY REMAINING AT START
53	2025-04-28 13:14:39	0:44:42	Active	MonitorOn	MonitorOff	97%

+ Detailed Session Information

Screen Brightness Duration Histogram
Duration in seconds at various screen brightness levels



Search Indexer Data

+ Query Events:

+ Indexing File Events:

Srum Data
Data obtained from the SRUM database. * in Power Estimation means the power value is from energy meter. Otherwise, it is from software model estimation.

+ Energy Meter

+ Power Estimation

Top

System Power State: Screen Off

	START TIME	DURATION	STATE	ENTRY REASON	EXIT REASON	% CAPACITY REMAINING AT START
54	2025-04-28 13:59:19	0:00:00	Screen Off	Screen Off Request	Transition To Sleep	57%

+ Detailed Session Information

This session contains no detailed information about top offenders.

Top

System Power State: Sleep

	START TIME	DURATION	STATE	ENTRY REASON	EXIT REASON	% CAPACITY REMAINING AT START
55	2025-04-28 13:59:20	0:00:03	Sleep	Transition To Sleep	Lid	57%

+ Detailed Session Information

Srum Data

Data obtained from the SRUM database. * in Power Estimation means the power value is from energy meter. Otherwise, it is from software model estimation.

+ Energy Meter

+ Power Estimation

This session contains no detailed information about top offenders.

Top

System Power State: Screen Off

	START TIME	DURATION	STATE	ENTRY REASON	EXIT REASON	% CAPACITY REMAINING AT START
56	2025-04-28 13:59:23	0:00:05	Screen Off	Lid	Transition To Sleep	57%

+ Detailed Session Information

Srum Data

Data obtained from the SRUM database. * in Power Estimation means the power value is from energy meter. Otherwise, it is from software model estimation.

+ Energy Meter

+ Power Estimation

This session contains no detailed information about top offenders.

Top

System Power State: Sleep

	START TIME	DURATION	STATE	ENERGY CHANGE	CHANGE RATE	% LOW POWER STATE TIME	% CAPACITY REMAINING AT START
57	2025-04-28 13:59:34	0:33:46	Sleep	364 1% of mWh battery	646 mW Drain	SW: 92% HW: 88%	57%

+ Detailed Session Information

DRIPS Histogram

Percent of time spent in DRIPS bucketed by time interval length



Top Offenders

Top 5 Offenders, ranked by active time

NAME	TYPE	% ACTIVE TIME	ACTIVE TIME
USB xHCI-kompatibel vrdstyrenhet (_SB.PC00.XHCI)	Fx Device	2%	0:00:41
Intel Smart Sound Technology BUS (_SB.PC00.HDAS)	Fx Device	2%	0:00:41
Intel(R) Wi-Fi 6 AX201 160MHz (_SB.PC00.CNVW)	Fx Device	1%	0:00:37
WU	Activator	1%	0:00:35
TCPIP	Activator	1%	0:00:23

- + PDC Phases
- + Activators
- + FX Devices
- + Processors
- + PEP Pre-Vetoes
- + SOC Subsystems

Srum Data
Data obtained from the SRUM database. * in Power Estimation means the power value is from energy meter. Otherwise, it is from software model estimation.

- + Energy Meter
- + Power Estimation

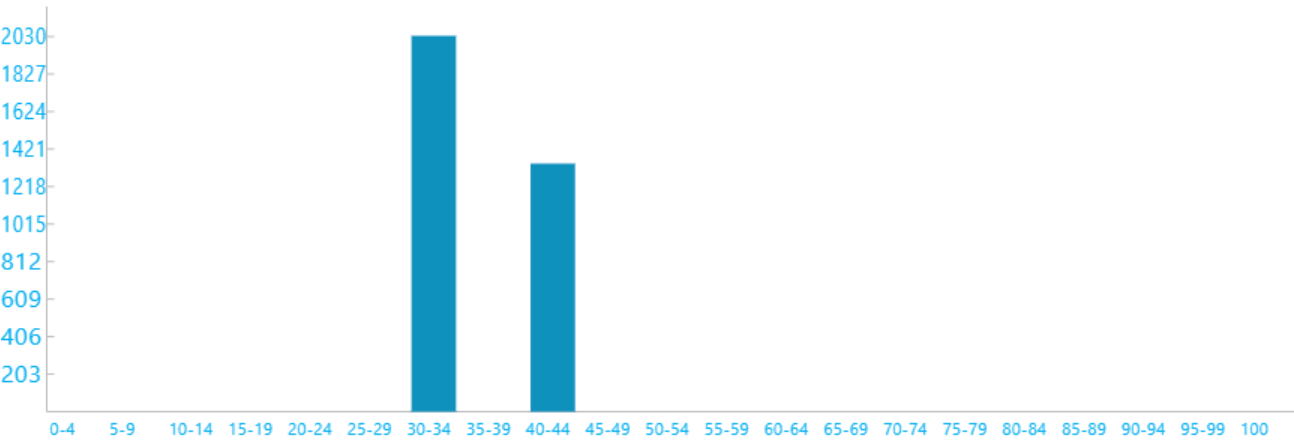
Top

System Power State: Active

	START TIME	DURATION	STATE	ENTRY REASON	EXIT REASON	% CAPACITY REMAINING AT START
58	2025-04-28 14:33:22	0:22:21	Active	MonitorOn	SwitchToDC	55%

- + Detailed Session Information

Screen Brightness Duration Histogram
Duration in seconds at various screen brightness levels



Search Indexer Data

- + Query Events:
- + Indexing File Events:

Srum Data
Data obtained from the SRUM database. * in Power Estimation means the power value is from energy meter. Otherwise, it is from software model estimation.

- + Energy Meter
- + Power Estimation

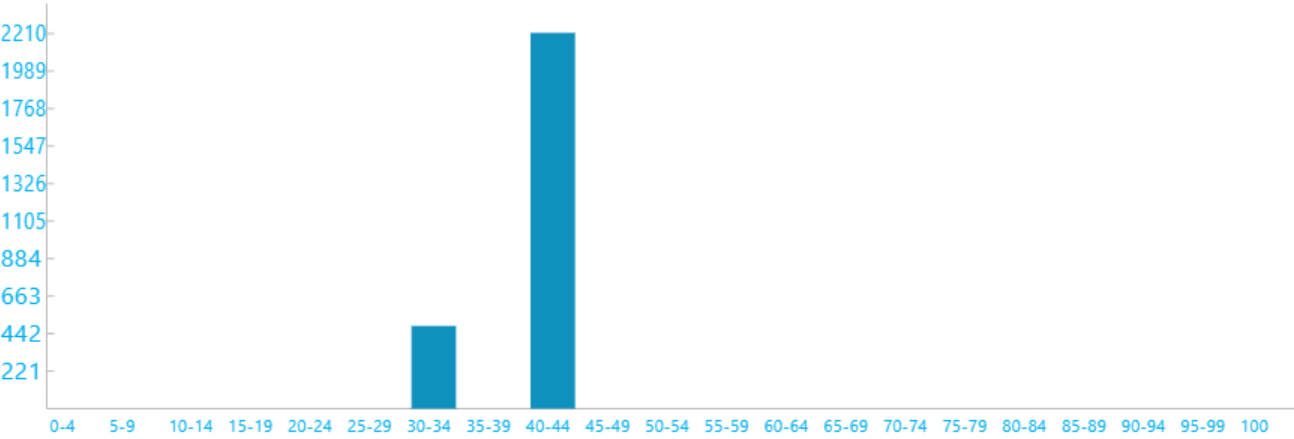
System Power State: Active

Top

	START TIME	DURATION	STATE	ENTRY REASON	EXIT REASON	% CAPACITY REMAINING AT START
59	2025-04-28 14:55:43	0:44:58	Active	SwitchToDC	MonitorOff	75%

+ Detailed Session Information

Screen Brightness Duration Histogram
Duration in seconds at various screen brightness levels



Search Indexer Data

+ Query Events:

+ Indexing File Events:

Srum Data

Data obtained from the SRUM database. * in Power Estimation means the power value is from energy meter. Otherwise, it is from software model estimation.

+ Energy Meter

+ Power Estimation

Top

System Power State: Screen Off

	START TIME	DURATION	STATE	ENTRY REASON	EXIT REASON	% CAPACITY REMAINING AT START
60	2025-04-28 15:40:40	0:00:00	Screen Off	Hibernate, or Shutdown	Lid	7%

+ Detailed Session Information

This session contains no detailed information about top offenders.

Top

System Power State: Active

	START TIME	DURATION	STATE	ENTRY REASON	EXIT REASON	% CAPACITY REMAINING AT START
61	2025-04-28 15:40:40	0:00:09	Active	----	Power Source Changed	7%

+ Detailed Session Information

Srum Data

Data obtained from the SRUM database. * in Power Estimation means the power value is from energy meter. Otherwise, it is from software model estimation.

+ Energy Meter

+ Power Estimation

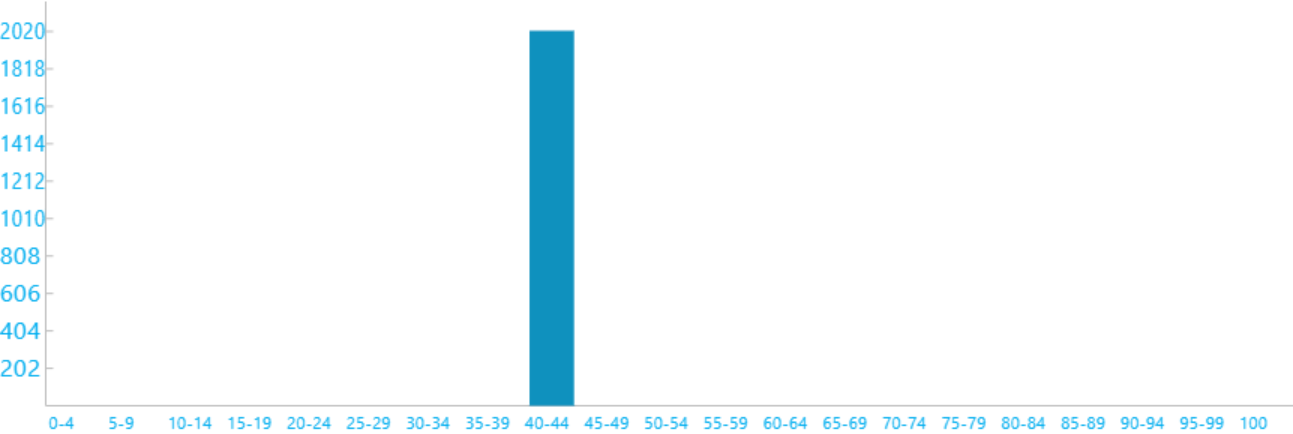
Top

System Power State: Active

	START TIME	DURATION	STATE	ENTRY REASON	EXIT REASON	% CAPACITY REMAINING AT START
62	2025-04-28 15:41:19	0:33:42	Active	SwitchToAC	MonitorOff	6%

+ Detailed Session Information

Screen Brightness Duration Histogram
Duration in seconds at various screen brightness levels



Search Indexer Data

+ Query Events:

+ Indexing File Events:

Srum Data
Data obtained from the SRUM database. * in Power Estimation means the power value is from energy meter. Otherwise, it is from software model estimation.

+ Energy Meter

+ Power Estimation

Top

System Power State: Screen Off

	START TIME	DURATION	STATE	ENERGY CHANGE	CHANGE RATE	% LOW POWER STATE TIME	% CAPACITY REMAINING AT START
63	2025-04-28 16:15:00	0:09:34	Screen Off	- -	- Charge	-	36%

+ Detailed Session Information

Top Offenders
Top 5 Offenders, ranked by active time

NAME	TYPE	% ACTIVE TIME	ACTIVE TIME
No CS Phase	PDC Phase	100%	0:09:34

+ PDC Phases

Srum Data
Data obtained from the SRUM database. * in Power Estimation means the power value is from energy meter. Otherwise, it is from software model estimation.

- + Energy Meter
- + Power Estimation

Top

System Power State: Sleep

	START TIME	DURATION	STATE	ENERGY CHANGE		CHANGE RATE	% LOW POWER STATE TIME		% CAPACITY REMAINING AT START
64	2025-04-28 16:24:35	0:01:15	Sleep	-	-	- Charge	SW: 81%	HW: 78%	45%

- + Detailed Session Information

DRIPS Histogram
Percent of time spent in DRIPS bucketed by time interval length



Top Offenders
Top 5 Offenders, ranked by active time

NAME	TYPE	% ACTIVE TIME	ACTIVE TIME
Low Power Phase	PDC Phase	7%	0:00:05
USB xHCI-kompatibel vrdstyrenhet (_SB.PC00.XHCI)	Fx Device	2%	0:00:01

- + PDC Phases
- + Activators
- + FX Devices
- + Processors
- + PEP Pre-Vetoes
- + SOC Subsystems

Srum Data
Data obtained from the SRUM database. * in Power Estimation means the power value is from energy meter. Otherwise, it is from software model estimation.

- + Energy Meter
- + Power Estimation

Top

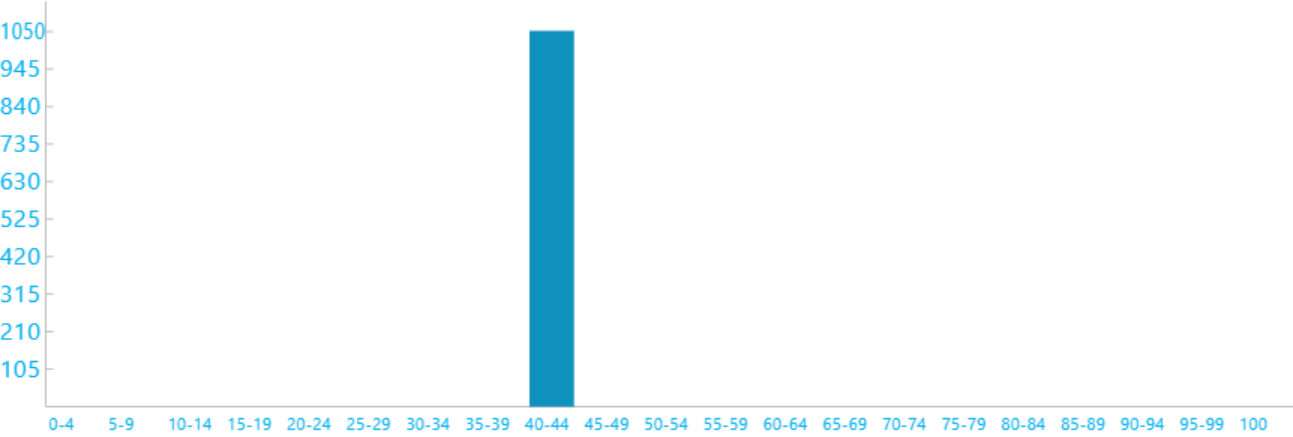
System Power State: Active

	START TIME	DURATION	STATE	ENTRY REASON	EXIT REASON	% CAPACITY REMAINING AT START
65	2025-04-28 16:25:45	0:17:32	Active	MonitorOn	MonitorOff	46%

+ Detailed Session Information

Screen Brightness Duration Histogram

Duration in seconds at various screen brightness levels



Search Indexer Data

+ Query Events:

+ Indexing File Events:

Srum Data

Data obtained from the SRUM database. * in Power Estimation means the power value is from energy meter. Otherwise, it is from software model estimation.

+ Energy Meter

+ Power Estimation

Top

System Power State: Screen Off

	START TIME	DURATION	STATE	ENERGY CHANGE	CHANGE RATE	% LOW POWER STATE TIME	% CAPACITY REMAINING AT START
66	2025-04-28 16:43:16	0:09:48	Screen Off	- -	- Charge	-	61%

+ Detailed Session Information

Top Offenders

Top 5 Offenders, ranked by active time

NAME	TYPE	% ACTIVE TIME	ACTIVE TIME
No CS Phase	PDC Phase	100%	0:09:49

+ PDC Phases

Srum Data

Data obtained from the SRUM database. * in Power Estimation means the power value is from energy meter. Otherwise, it is from software model estimation.

+ Energy Meter

+ Power Estimation

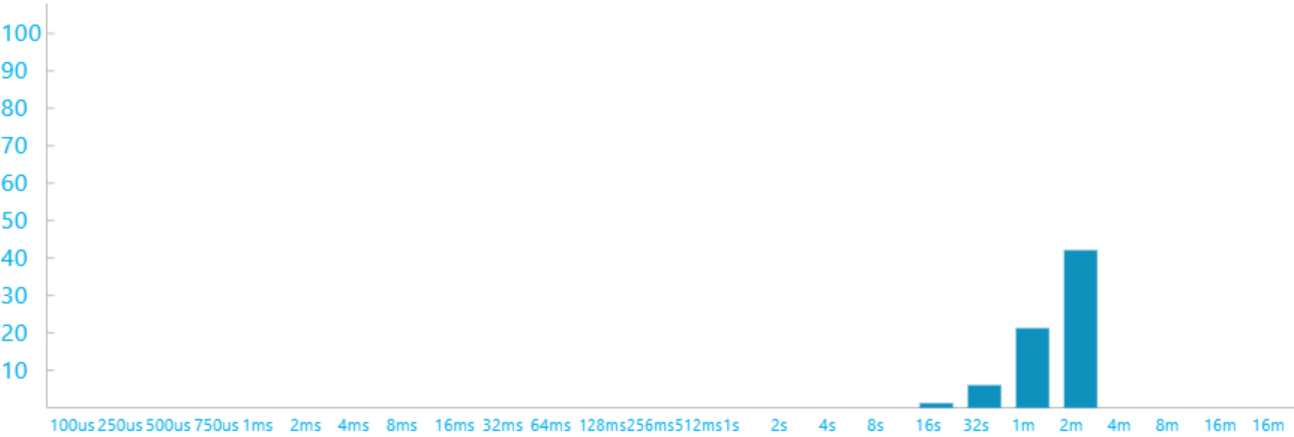
Top

System Power State: Sleep

	START TIME	DURATION	STATE	ENERGY CHANGE		CHANGE RATE	% LOW POWER STATE TIME		% CAPACITY REMAINING AT START
							SW:	HW:	
67	2025-04-28 16:53:05	0:24:25	Sleep	-	-	- Charge	98%	94%	70%

+ Detailed Session Information

DRIPS Histogram
Percent of time spent in DRIPS bucketed by time interval length



Top Offenders
Top 5 Offenders, ranked by active time

NAME	TYPE	% ACTIVE TIME	ACTIVE TIME
Intel(R) Wi-Fi 6 AX201 160MHz (_SB.PC00.CNVW)	Fx Device	0%	0:00:11
CPU C0 Time.Non-attributed Time	Processor	0%	0:00:05
Low Power Phase	PDC Phase	0%	0:00:05
WNS	Activator	0%	0:00:02
USB xHCI-kompatibel vrdstyrenhet (_SB.PC00.XHCI)	Fx Device	0%	0:00:01

+ PDC Phases

+ Activators

+ FX Devices

+ Processors

+ PEP Pre-Vetoes

+ SOC Subsystems

Srum Data
Data obtained from the SRUM database. * in Power Estimation means the power value is from energy meter. Otherwise, it is from software model estimation.

+ Energy Meter

+ Power Estimation

Top

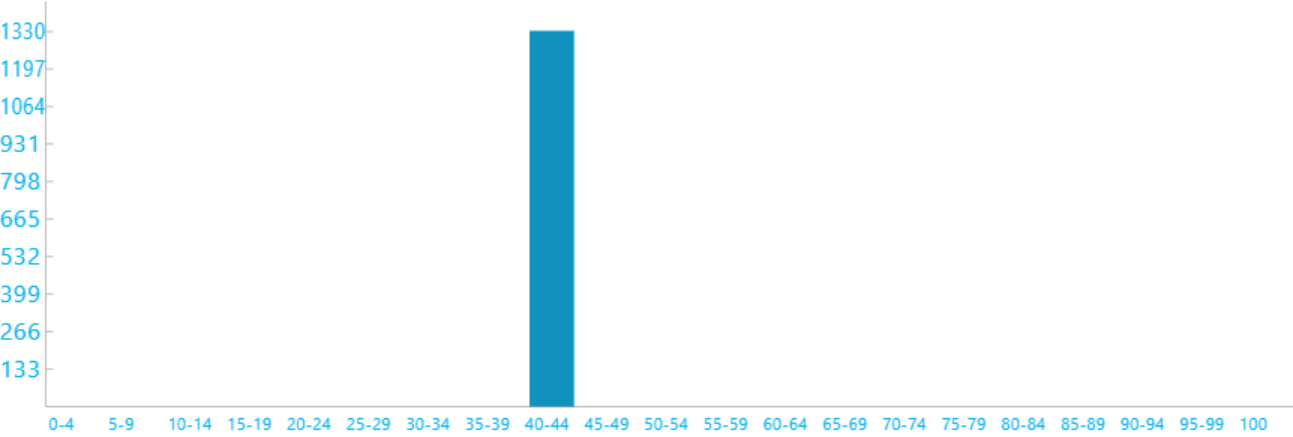
System Power State: Active

	START TIME	DURATION	STATE	ENTRY REASON	EXIT REASON	% CAPACITY REMAINING AT START
68	2025-04-28 17:17:26	0:22:08	Active	MonitorOn	MonitorOff	89%

+ Detailed Session Information

Screen Brightness Duration Histogram

Duration in seconds at various screen brightness levels



Search Indexer Data

+ Indexing File Events:

Srum Data

Data obtained from the SRUM database. * in Power Estimation means the power value is from energy meter. Otherwise, it is from software model estimation.

+ Energy Meter

+ Power Estimation

Top

System Power State: Screen Off

	START TIME	DURATION	STATE	ENERGY CHANGE	CHANGE RATE	% LOW POWER STATE TIME	% CAPACITY REMAINING AT START
69	2025-04-28 17:39:33	0:09:49	Screen Off	- -	- Charge	-	98%

+ Detailed Session Information

Top Offenders

Top 5 Offenders, ranked by active time

NAME	TYPE	% ACTIVE TIME	ACTIVE TIME
No CS Phase	PDC Phase	100%	0:09:49

+ PDC Phases

Srum Data

Data obtained from the SRUM database. * in Power Estimation means the power value is from energy meter. Otherwise, it is from software model estimation.

+ Energy Meter

+ Power Estimation

Top

System Power State: Sleep

	START TIME	DURATION	STATE	ENERGY CHANGE		CHANGE RATE	% LOW POWER STATE TIME		% CAPACITY REMAINING AT START
70	2025-04-28 17:49:23	0:25:39	Sleep	-	-	-	Charge	SW: 98% HW: 95%	100%

+ Detailed Session Information

DRIPS Histogram
Percent of time spent in DRIPS bucketed by time interval length



Top Offenders
Top 5 Offenders, ranked by active time

NAME	TYPE	% ACTIVE TIME	ACTIVE TIME
Intel(R) Wi-Fi 6 AX201 160MHz (_SB.PC00.CNVW)	Fx Device	0%	0:00:10
Low Power Phase	PDC Phase	0%	0:00:05
WNS	Activator	0%	0:00:02
USB xHCI-kompatibel vrdstyrenhet (_SB.PC00.XHCI)	Fx Device	0%	0:00:01

+ PDC Phases

+ Activators

+ FX Devices

+ Processors

+ PEP Pre-Vetoes

+ SOC Subsystems

Srum Data
Data obtained from the SRUM database. * in Power Estimation means the power value is from energy meter. Otherwise, it is from software model estimation.

+ Energy Meter

+ Power Estimation

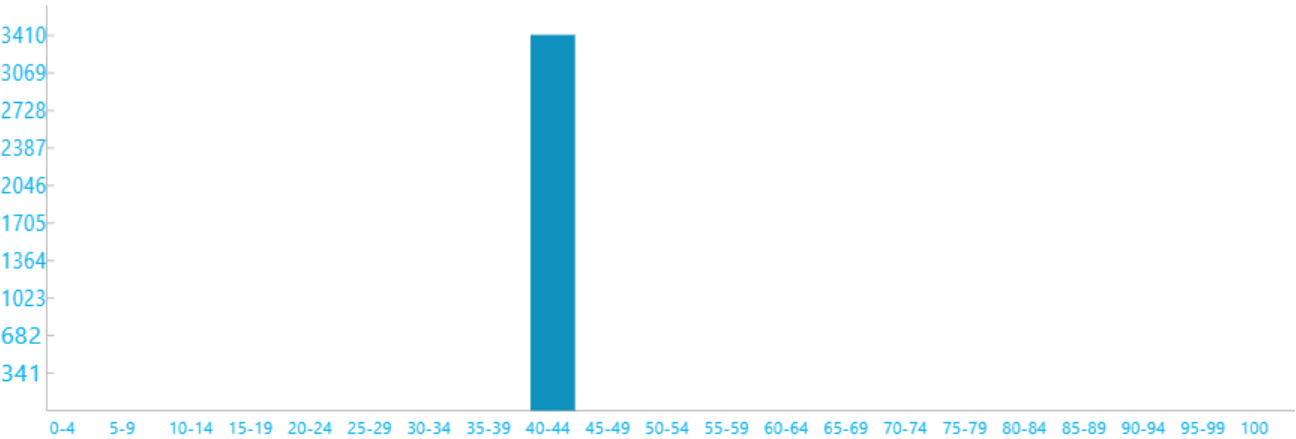
Top

System Power State: Active

	START TIME	DURATION	STATE	ENTRY REASON	EXIT REASON	% CAPACITY REMAINING AT START
71	2025-04-28 18:14:58	0:56:51	Active	MonitorOn	MonitorOff	100%

+ Detailed Session Information

Screen Brightness Duration Histogram
Duration in seconds at various screen brightness levels



Search Indexer Data

+ Query Events:

+ Indexing File Events:

Srum Data
Data obtained from the SRUM database. * in Power Estimation means the power value is from energy meter. Otherwise, it is from software model estimation.

+ Energy Meter

+ Power Estimation

Top

System Power State: Screen Off

	START TIME	DURATION	STATE	ENERGY CHANGE		CHANGE RATE	% LOW POWER STATE TIME	% CAPACITY REMAINING AT START
72	2025-04-28 19:11:48	0:09:41	Screen Off	-	-	- Charge	-	100%

+ Detailed Session Information

Top Offenders
Top 5 Offenders, ranked by active time

NAME	TYPE	% ACTIVE TIME	ACTIVE TIME
No CS Phase	PDC Phase	99%	0:09:41

+ PDC Phases

Srum Data
Data obtained from the SRUM database. * in Power Estimation means the power value is from energy meter. Otherwise, it is from software model estimation.

+ Energy Meter

+ Power Estimation

Top

System Power State: Sleep

	START TIME	DURATION	STATE	ENERGY CHANGE		CHANGE RATE	% LOW POWER STATE TIME		% CAPACITY REMAINING AT START
73	2025-04-28 19:21:30	7:58:27	Sleep	-	-	-	Charge	SW: 89% HW: 84%	100%

+ Detailed Session Information

DRIPS Histogram
Percent of time spent in DRIPS bucketed by time interval length



Top Offenders
Top 5 Offenders, ranked by active time

	NAME	TYPE	% ACTIVE TIME	ACTIVE TIME
BI		Activator	24%	1:55:47
	Intel(R) Wi-Fi 6 AX201 160MHz (_SB.PC00.CNVW)	Fx Device	0%	0:02:54
	Update Orchestrator Client	Activator	0%	0:01:14
	WNS	Activator	0%	0:01:05
	WU	Activator	0%	0:00:35

+ PDC Phases

+ Activators

+ FX Devices

+ Processors

+ PEP Pre-Vetoes

+ SOC Subsystems

Srum Data
Data obtained from the SRUM database. * in Power Estimation means the power value is from energy meter. Otherwise, it is from software model estimation.

+ Energy Meter

+ Power Estimation

Top

System Power State: Screen Off

	START TIME	DURATION	STATE	ENTRY REASON	EXIT REASON	% CAPACITY REMAINING AT START
74	2025-04-29 03:19:53	0:00:04	Screen Off	PDC Task Client: Maintenance Scheduler	Transition To Sleep	100%

+ Detailed Session Information

Srum Data

Data obtained from the SRUM database. * in Power Estimation means the power value is from energy meter. Otherwise, it is from software model estimation.

+ Energy Meter

+ Power Estimation

This session contains no detailed information about top offenders.

Top

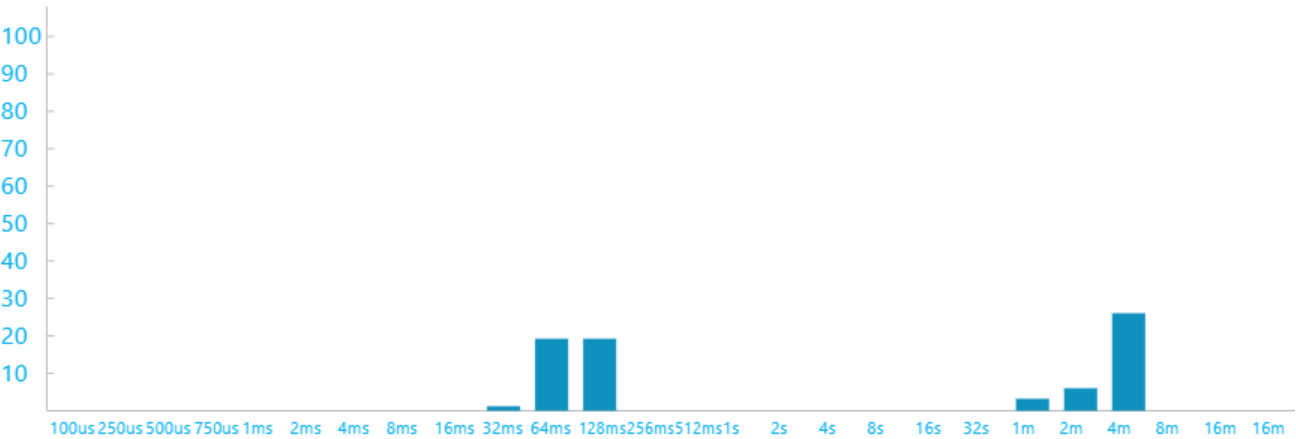
System Power State: Sleep

	START TIME	DURATION	STATE	ENERGY CHANGE		CHANGE RATE	% LOW POWER STATE TIME		% CAPACITY REMAINING AT START
75	2025-04-29 03:20:02	1:28:57	Sleep	-	-	- Charge	SW: 74%	HW: 67%	100%

+ Detailed Session Information

DRIPS Histogram

Percent of time spent in DRIPS bucketed by time interval length



Top Offenders

Top 5 Offenders, ranked by active time

	NAME	TYPE	% ACTIVE TIME	ACTIVE TIME
BI		Activator	64%	0:57:05
	Update Orchestrator Client	Activator	0%	0:00:21
	WNS	Activator	0%	0:00:09
	Intel(R) Wi-Fi 6 AX201 160MHz (_SB.PC00.CNVW)	Fx Device	0%	0:00:07
	Low Power Phase	PDC Phase	0%	0:00:05

+ PDC Phases

+ Activators

+ FX Devices

+ Processors

+ PEP Pre-Vetoes

+ SOC Subsystems

Srum Data

Data obtained from the SRUM database. * in Power Estimation means the power value is from energy meter. Otherwise, it is from software model estimation.

+ Energy Meter

+ Power Estimation

Top

System Power State: Screen Off

	START TIME	DURATION	STATE	ENTRY REASON	EXIT REASON	% CAPACITY REMAINING AT START
76	2025-04-29 04:48:50	0:00:00	Screen Off	PDC Task Client: Maintenance Scheduler	Transition To Sleep	100%

+ Detailed Session Information

This session contains no detailed information about top offenders.

Top

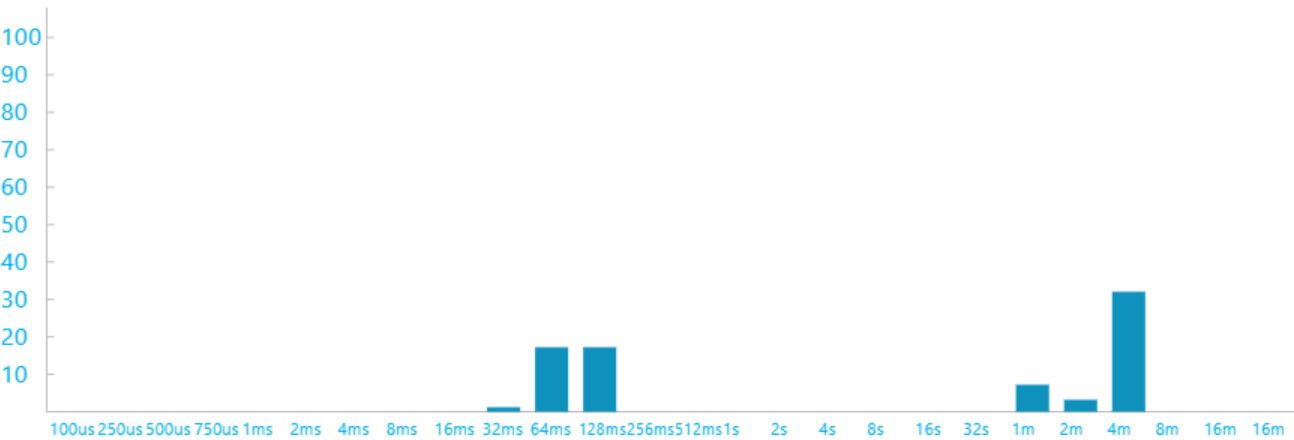
System Power State: Sleep

	START TIME	DURATION	STATE	ENERGY CHANGE	CHANGE RATE	% LOW POWER STATE TIME		% CAPACITY REMAINING AT START
77	2025-04-29 04:48:55	3:07:04	Sleep	- -	Charge	SW: 76%	HW: 69%	100%

+ Detailed Session Information

DRIPS Histogram

Percent of time spent in DRIPS bucketed by time interval length



Top Offenders

Top 5 Offenders, ranked by active time

NAME	TYPE	% ACTIVE TIME	ACTIVE TIME
BI	Activator	57%	1:47:37
Update Orchestrator Client	Activator	0%	0:00:32
Intel(R) PCI Express Root Port #7 - A0BE (_SB.PC00.RP07)	Fx Device	0%	0:00:24
Intel(R) Wi-Fi 6 AX201 160MHz (_SB.PC00.CNVW)	Fx Device	0%	0:00:23
WNS	Activator	0%	0:00:20

+ PDC Phases

+ Activators

+ FX Devices

+ Processors

+ PEP Pre-Vetoes

+ SOC Subsystems

Srum Data

Data obtained from the SRUM database. * in Power Estimation means the power value is from energy meter. Otherwise, it is from software model estimation.

+ Energy Meter

+ Power Estimation



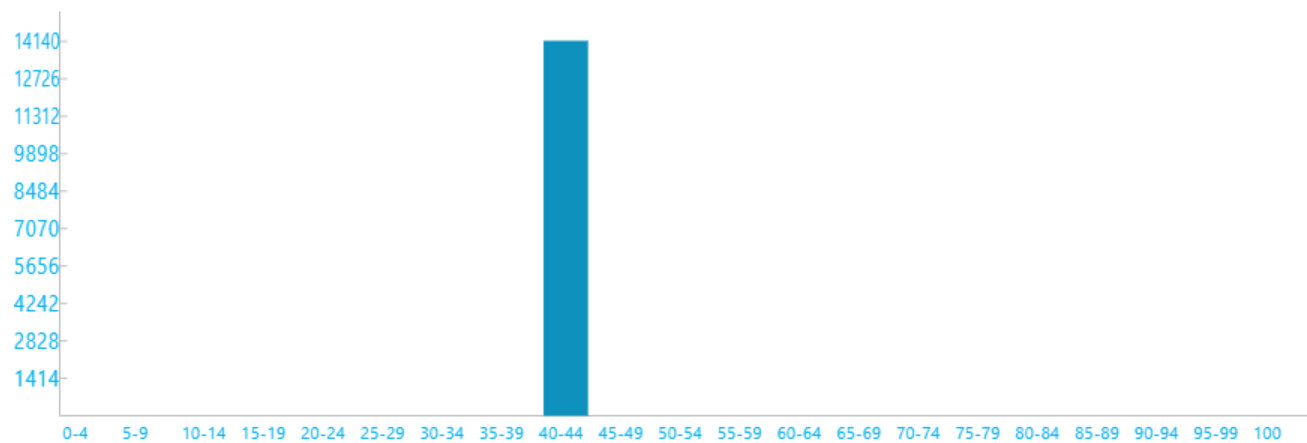
System Power State: Active

	START TIME	DURATION	STATE	ENTRY REASON	EXIT REASON	% CAPACITY REMAINING AT START
78	2025-04-29 07:55:53	3:55:59	Active	MonitorOn	MonitorOff	100%

+ Detailed Session Information

Screen Brightness Duration Histogram

Duration in seconds at various screen brightness levels



Search Indexer Data

+ Query Events:

+ Indexing File Events:

Srum Data

Data obtained from the SRUM database. * in Power Estimation means the power value is from energy meter. Otherwise, it is from software model estimation.

+ Energy Meter

+ Power Estimation



System Power State: Screen Off

	START TIME	DURATION	STATE	ENTRY REASON	EXIT REASON	% CAPACITY REMAINING AT START
79	2025-04-29 11:51:50	0:00:21	Screen Off	Video Idle Timeout	Transition To Sleep	100%

+ Detailed Session Information

Srum Data

Data obtained from the SRUM database. * in Power Estimation means the power value is from energy meter. Otherwise, it is from software model estimation.

+ Energy Meter

+ Power Estimation

This session contains no detailed information about top offenders.

Top

System Power State: Sleep

	START TIME	DURATION	STATE	ENERGY CHANGE		CHANGE RATE	% LOW POWER STATE TIME		% CAPACITY REMAINING AT START
80	2025-04-29 11:52:12	1:03:41	Sleep	-	-	- Charge	SW: 99%	HW: 94%	100%

+ Detailed Session Information

DRIPS Histogram

Percent of time spent in DRIPS bucketed by time interval length



Top Offenders

Top 5 Offenders, ranked by active time

NAME	TYPE	% ACTIVE TIME	ACTIVE TIME
Intel(R) Wi-Fi 6 AX201 160MHz (_SB.PC00.CNVW)	Fx Device	0%	0:00:21
WNS	Activator	0%	0:00:07
Low Power Phase	PDC Phase	0%	0:00:05
Update Orchestrator Client	Activator	0%	0:00:02
BI	Activator	0%	0:00:01

+ PDC Phases

+ Activators

+ FX Devices

+ Processors

+ PEP Pre-Vetoes

+ SOC Subsystems

Srum Data

Data obtained from the SRUM database. * in Power Estimation means the power value is from energy meter. Otherwise, it is from software model estimation.

+ Energy Meter

+ Power Estimation

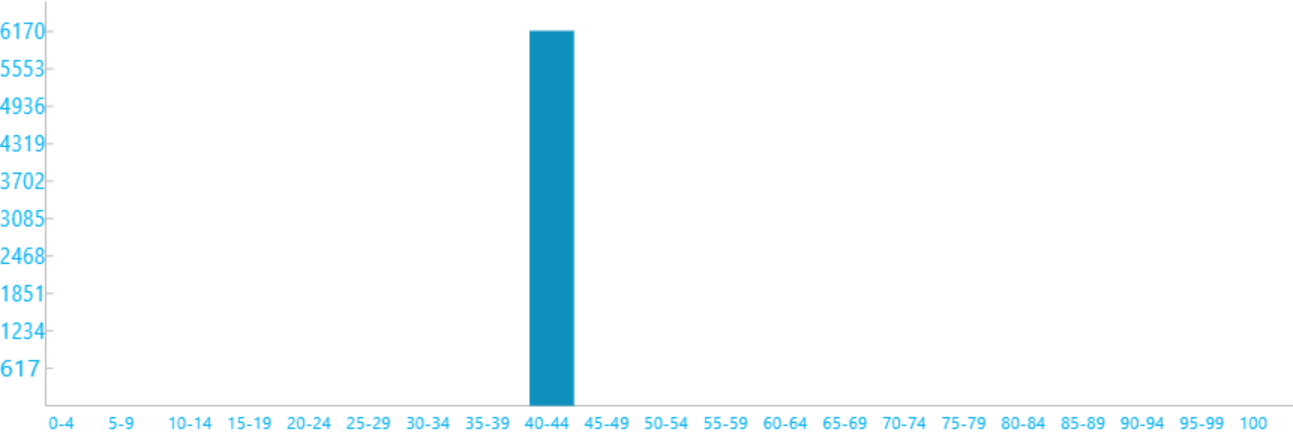
Top

System Power State: Active

	START TIME	DURATION	STATE	ENTRY REASON	EXIT REASON	% CAPACITY REMAINING AT START
81	2025-04-29 12:55:59	1:42:44	Active	MonitorOn	MonitorOff	100%

+ Detailed Session Information

Screen Brightness Duration Histogram
Duration in seconds at various screen brightness levels



Search Indexer Data

+ Query Events:

+ Indexing File Events:

Srum Data
Data obtained from the SRUM database. * in Power Estimation means the power value is from energy meter. Otherwise, it is from software model estimation.

+ Energy Meter

+ Power Estimation

Top

System Power State: Screen Off

	START TIME	DURATION	STATE	ENERGY CHANGE	CHANGE RATE	% LOW POWER STATE TIME	% CAPACITY REMAINING AT START
82	2025-04-29 14:38:42	0:09:35	Screen Off	- -	- Charge	-	100%

+ Detailed Session Information

Top Offenders
Top 5 Offenders, ranked by active time

NAME	TYPE	% ACTIVE TIME	ACTIVE TIME
No CS Phase	PDC Phase	100%	0:09:35

+ PDC Phases

Srum Data
Data obtained from the SRUM database. * in Power Estimation means the power value is from energy meter. Otherwise, it is from software model estimation.

+ Energy Meter

+ Power Estimation

Top

System Power State: Sleep

	START TIME	DURATION	STATE	ENERGY CHANGE		CHANGE RATE	% LOW POWER STATE TIME		% CAPACITY REMAINING AT START
83	2025-04-29 14:48:17	0:04:56	Sleep	-	-	- Charge	SW: 95%	HW: 91%	100%

+ Detailed Session Information

DRIPS Histogram

Percent of time spent in DRIPS bucketed by time interval length



Top Offenders

Top 5 Offenders, ranked by active time

NAME	TYPE	% ACTIVE TIME	ACTIVE TIME
Low Power Phase	PDC Phase	1%	0:00:05
USB xHCI-kompatibel vrdstyrenhet (_SB.PC00.XHCI)	Fx Device	0%	0:00:01
Intel(R) Wi-Fi 6 AX201 160MHz (_SB.PC00.CNVW)	Fx Device	0%	0:00:01

+ PDC Phases

+ Activators

+ FX Devices

+ Processors

+ PEP Pre-Vetoes

+ SOC Subsystems

Srum Data

Data obtained from the SRUM database. * in Power Estimation means the power value is from energy meter. Otherwise, it is from software model estimation.

+ Energy Meter

+ Power Estimation

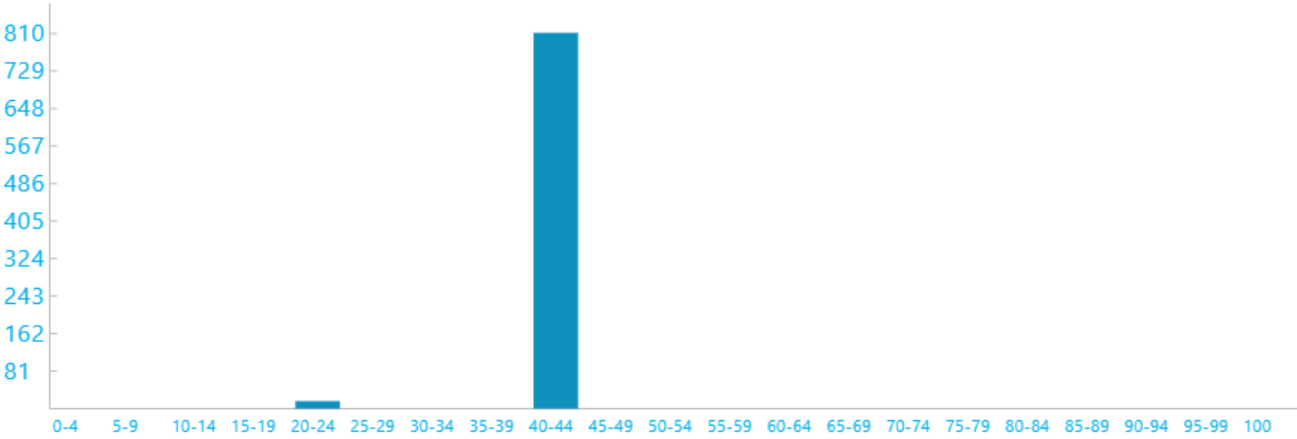
Top

System Power State: Active

	START TIME	DURATION	STATE	ENTRY REASON	EXIT REASON	% CAPACITY REMAINING AT START
84	2025-04-29 14:53:09	0:13:44	Active	MonitorOn	MonitorOff	100%

+ Detailed Session Information

Screen Brightness Duration Histogram
Duration in seconds at various screen brightness levels



Search Indexer Data

+ Indexing File Events:

Srum Data
Data obtained from the SRUM database. * in Power Estimation means the power value is from energy meter. Otherwise, it is from software model estimation.

+ Energy Meter

+ Power Estimation

Top

System Power State: Screen Off

	START TIME	DURATION	STATE	ENTRY REASON	EXIT REASON	% CAPACITY REMAINING AT START
85	2025-04-29 15:06:52	0:00:06	Screen Off	Video Idle Timeout	Transition To Sleep	100%

+ Detailed Session Information

Srum Data
Data obtained from the SRUM database. * in Power Estimation means the power value is from energy meter. Otherwise, it is from software model estimation.

+ Energy Meter

+ Power Estimation

This session contains no detailed information about top offenders.

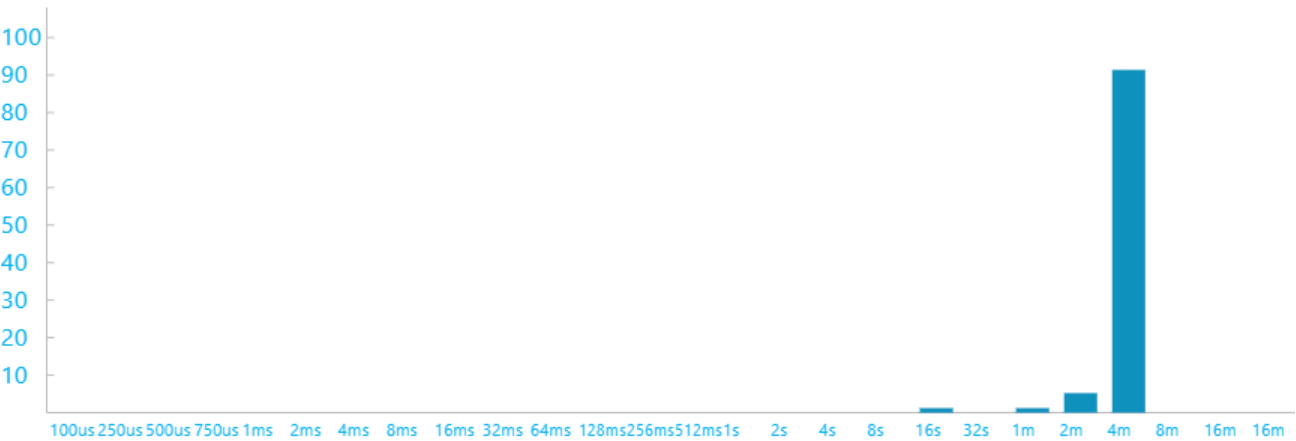
Top

System Power State: Sleep

	START TIME	DURATION	STATE	ENERGY CHANGE	CHANGE RATE	% LOW POWER STATE TIME		% CAPACITY REMAINING AT START
86	2025-04-29 15:06:58	5:24:37	Sleep	- -	- Charge	SW: 98%	HW: 93%	100%

+ Detailed Session Information

DRIPS Histogram
Percent of time spent in DRIPS bucketed by time interval length



Top Offenders
Top 5 Offenders, ranked by active time

NAME	TYPE	% ACTIVE TIME	ACTIVE TIME
USB xHCI-kompatibel vrdstyrenhet (_SB.PC00.XHCI)	Fx Device	0%	0:02:01
Intel(R) Wi-Fi 6 AX201 160MHz (_SB.PC00.CNVW)	Fx Device	0%	0:01:59
BI	Activator	0%	0:01:33
Update Orchestrator Client	Activator	0%	0:00:56
WU	Activator	0%	0:00:47

+ PDC Phases

+ Activators

+ FX Devices

+ Processors

+ PEP Pre-Vetoes

+ SOC Subsystems

Srum Data
Data obtained from the SRUM database. * in Power Estimation means the power value is from energy meter. Otherwise, it is from software model estimation.

+ Energy Meter

+ Power Estimation

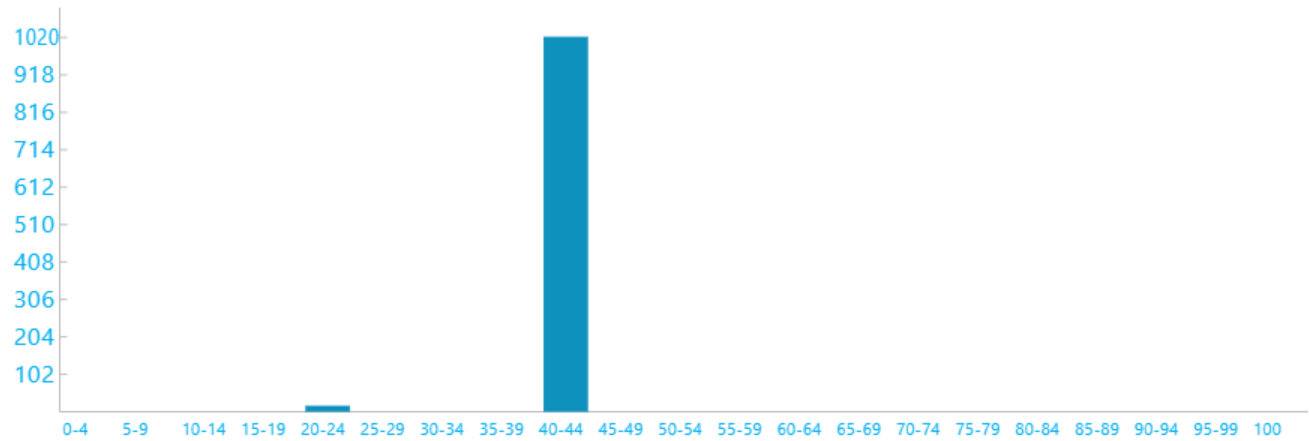
Top

System Power State: Active

	START TIME	DURATION	STATE	ENTRY REASON	EXIT REASON	% CAPACITY REMAINING AT START
87	2025-04-29 20:31:48	0:16:54	Active	MonitorOn	MonitorOff	100%

+ Detailed Session Information

Screen Brightness Duration Histogram
Duration in seconds at various screen brightness levels



Search Indexer Data

- + Query Events:
- + Indexing File Events:

Srum Data
Data obtained from the SRUM database. * in Power Estimation means the power value is from energy meter. Otherwise, it is from software model estimation.

- + Energy Meter
- + Power Estimation

Top

System Power State: Screen Off

	START TIME	DURATION	STATE	ENTRY REASON	EXIT REASON	% CAPACITY REMAINING AT START
88	2025-04-29 20:48:41	0:00:01	Screen Off	Video Idle Timeout	Transition To Sleep	100%

- + Detailed Session Information

Srum Data
Data obtained from the SRUM database. * in Power Estimation means the power value is from energy meter. Otherwise, it is from software model estimation.

- + Energy Meter
- + Power Estimation

This session contains no detailed information about top offenders.

Top

System Power State: Sleep

	START TIME	DURATION	STATE	ENTRY REASON	EXIT REASON	% CAPACITY REMAINING AT START
89	2025-04-29 20:48:42	0:00:41	Sleep	Transition To Sleep	Input Mouse	100%

- + Detailed Session Information

Srum Data
Data obtained from the SRUM database. * in Power Estimation means the power value is from energy meter. Otherwise, it is from software model estimation.

- + Energy Meter

+ Power Estimation

This session contains no detailed information about top offenders.

Top

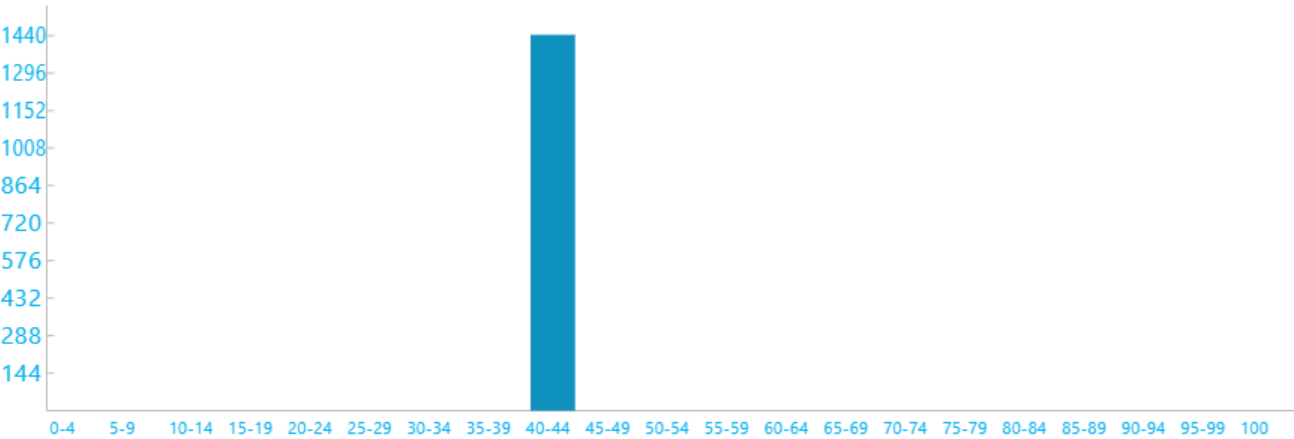
System Power State: Active

	START TIME	DURATION	STATE	ENTRY REASON	EXIT REASON	% CAPACITY REMAINING AT START
90	2025-04-29 20:49:24	0:24:04	Active	MonitorOn	MonitorOff	100%

+ Detailed Session Information

Screen Brightness Duration Histogram

Duration in seconds at various screen brightness levels



Search Indexer Data

+ Query Events:

+ Indexing File Events:

Srum Data

Data obtained from the SRUM database. * in Power Estimation means the power value is from energy meter. Otherwise, it is from software model estimation.

+ Energy Meter

+ Power Estimation

Top

System Power State: Screen Off

	START TIME	DURATION	STATE	ENERGY CHANGE	CHANGE RATE	% LOW POWER STATE TIME	% CAPACITY REMAINING AT START
91	2025-04-29 21:13:26	0:09:45	Screen Off	- -	- Charge	-	100%

+ Detailed Session Information

Top Offenders

Top 5 Offenders, ranked by active time

NAME	TYPE	% ACTIVE TIME	ACTIVE TIME
No CS Phase	PDC Phase	99%	0:09:45

+ PDC Phases

Srum Data

Data obtained from the SRUM database. * in Power Estimation means the power value is from energy meter. Otherwise, it is from software model estimation.

+ Energy Meter

+ Power Estimation

Top

System Power State: Sleep

	START TIME	DURATION	STATE	ENERGY CHANGE	CHANGE RATE	% LOW POWER STATE TIME	% CAPACITY REMAINING AT START
92	2025-04-29 21:23:12	10:55:08	Sleep	289 1% of mWh battery	26 mW Charge	SW: 99% HW: 94%	100%

+ Detailed Session Information

DRIPS Histogram

Percent of time spent in DRIPS bucketed by time interval length



Top Offenders

Top 5 Offenders, ranked by active time

NAME	TYPE	% ACTIVE TIME	ACTIVE TIME
Intel(R) Wi-Fi 6 AX201 160MHz (_SB.PC00.CNVW)	Fx Device	0%	0:04:18
BI	Activator	0%	0:03:02
WNS	Activator	0%	0:01:17
Update Orchestrator Client	Activator	0%	0:01:11
WU	Activator	0%	0:00:59

+ PDC Phases

+ Activators

+ FX Devices

+ Processors

+ PEP Pre-Vetoes

+ SOC Subsystems

Srum Data

Data obtained from the SRUM database. * in Power Estimation means the power value is from energy meter. Otherwise, it is from software model estimation.

+ Energy Meter

+ Power Estimation

Top

System Power State: Screen Off

	START TIME	DURATION	STATE	ENTRY REASON	EXIT REASON	% CAPACITY REMAINING AT START
93	2025-04-30 08:18:16	0:00:00	Screen Off	AC/DC Display Burst Suppressed	Lid	99%

+ Detailed Session Information

This session contains no detailed information about top offenders.

Top

System Power State: Screen Off

	START TIME	DURATION	STATE	ENTRY REASON	EXIT REASON	% CAPACITY REMAINING AT START
94	2025-04-30 08:18:16	0:00:04	Screen Off	Lid	Transition To Sleep	99%

+ Detailed Session Information

Srum Data
Data obtained from the SRUM database. * in Power Estimation means the power value is from energy meter. Otherwise, it is from software model estimation.

+ Energy Meter

+ Power Estimation

This session contains no detailed information about top offenders.

Top

System Power State: Sleep

	START TIME	DURATION	STATE	ENERGY CHANGE		CHANGE RATE		% LOW POWER STATE TIME		% CAPACITY REMAINING AT START
95	2025-04-30 08:18:26	1:06:31	Sleep	638 mWh	2% of battery	575 mW	Drain	SW: 96%	HW: 92%	99%

+ Detailed Session Information

DRIPS Histogram
Percent of time spent in DRIPS bucketed by time interval length



Top Offenders
Top 5 Offenders, ranked by active time

NAME	TYPE	% ACTIVE TIME	ACTIVE TIME
USB xHCI-kompatibel vrdstyrenhet (_SB.PC00.XHCI)	Fx Device	1%	0:00:55

NAME	TYPE	% ACTIVE TIME	ACTIVE TIME
Intel Smart Sound Technology BUS (_SB.PC00.HDAS)	Fx Device	1%	0:00:41
DHCP	Activator	0%	0:00:30
NCSI	Activator	0%	0:00:23
Intel(R) Wi-Fi 6 AX201 160MHz (_SB.PC00.CNVW)	Fx Device	0%	0:00:19

+ PDC Phases

+ Activators

+ FX Devices

+ Processors

+ PEP Pre-Vetoes

+ SOC Subsystems

Srum Data

Data obtained from the SRUM database. * in Power Estimation means the power value is from energy meter. Otherwise, it is from software model estimation.

+ Energy Meter

+ Power Estimation

Top

System Power State: Active

	START TIME	DURATION	STATE	ENTRY REASON	EXIT REASON	% CAPACITY REMAINING AT START
96	2025-04-30 09:24:48	0:00:01	Active	----	Power Source Changed	97%

+ Detailed Session Information

Srum Data

Data obtained from the SRUM database. * in Power Estimation means the power value is from energy meter. Otherwise, it is from software model estimation.

+ Energy Meter

+ Power Estimation

Top

System Power State: Active

	START TIME	DURATION	STATE	ENTRY REASON	EXIT REASON	% CAPACITY REMAINING AT START
97	2025-04-30 09:24:50	0:00:56	Active	Power Source Changed	Power Source Changed	97%

+ Detailed Session Information

Srum Data

Data obtained from the SRUM database. * in Power Estimation means the power value is from energy meter. Otherwise, it is from software model estimation.

+ Energy Meter

+ Power Estimation

Top

System Power State: Active

	START TIME	DURATION	STATE	ENTRY REASON	EXIT REASON	% CAPACITY REMAINING AT START
98	2025-04-30 09:25:47	0:00:05	Active	Power Source Changed	Power Source Changed	100%

+ Detailed Session Information

Srum Data
Data obtained from the SRUM database. * in Power Estimation means the power value is from energy meter. Otherwise, it is from software model estimation.

+ Energy Meter

+ Power Estimation

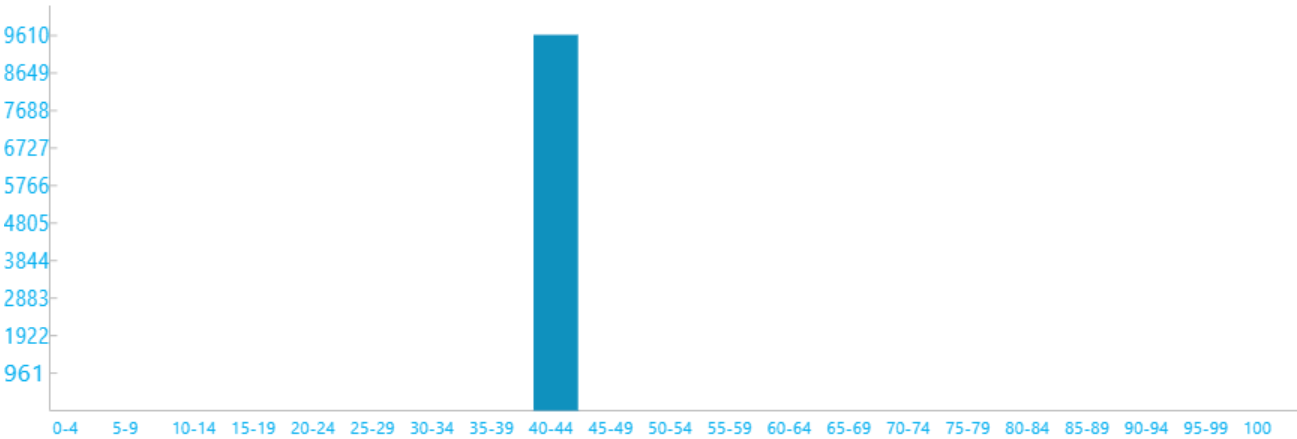
Top

System Power State: Active

	START TIME	DURATION	STATE	ENTRY REASON	EXIT REASON	% CAPACITY REMAINING AT START
99	2025-04-30 09:25:54	2:40:15	Active	SwitchToAC	MonitorOff	96%

+ Detailed Session Information

Screen Brightness Duration Histogram
Duration in seconds at various screen brightness levels



Search Indexer Data

+ Query Events:

+ Indexing File Events:

Srum Data
Data obtained from the SRUM database. * in Power Estimation means the power value is from energy meter. Otherwise, it is from software model estimation.

+ Energy Meter

+ Power Estimation

Top

System Power State: Screen Off

	START TIME	DURATION	STATE	ENTRY REASON	EXIT REASON	% CAPACITY REMAINING AT START
100	2025-04-30 12:06:08	0:04:34	Screen Off	Video Idle Timeout	Input Mouse	100%

+ Detailed Session Information

Srum Data

Data obtained from the SRUM database. * in Power Estimation means the power value is from energy meter. Otherwise, it is from software model estimation.

+ Energy Meter

+ Power Estimation

This session contains no detailed information about top offenders.

Top

System Power State: Active

	START TIME	DURATION	STATE	ENTRY REASON		EXIT REASON	% CAPACITY REMAINING AT START
101	2025-04-30 12:10:42	0:00:30	Active	----		----	100%

+ Detailed Session Information

Srum Data

Data obtained from the SRUM database. * in Power Estimation means the power value is from energy meter. Otherwise, it is from software model estimation.

+ Energy Meter

+ Power Estimation

Top

System Power State: Screen Off

	START TIME	DURATION	STATE	ENERGY CHANGE		CHANGE RATE	% LOW POWER STATE TIME	% CAPACITY REMAINING AT START
102	2025-04-30 12:11:13	0:09:32	Screen Off	-	-	- Charge	-	100%

+ Detailed Session Information

Top Offenders

Top 5 Offenders, ranked by active time

NAME	TYPE	% ACTIVE TIME	ACTIVE TIME
No CS Phase	PDC Phase	100%	0:09:33

+ [PDC Phases](#)

Srum Data

Data obtained from the SRUM database. * in Power Estimation means the power value is from energy meter. Otherwise, it is from software model estimation.

+ Energy Meter

+ Power Estimation

Top

System Power State: Sleep

	START TIME	DURATION	STATE	ENERGY CHANGE		CHANGE RATE	% LOW POWER STATE TIME		% CAPACITY REMAINING AT START
103	2025-04-30 12:20:45	0:33:28	Sleep	-	-	- Charge	SW: 99%	HW: 0%	100%

+ Detailed Session Information

DRIPS Histogram
Percent of time spent in DRIPS bucketed by time interval length



Top Offenders
Top 5 Offenders, ranked by active time

NAME	TYPE	% ACTIVE TIME	ACTIVE TIME
Low Power Phase	PDC Phase	0%	0:00:05
Intel(R) Wi-Fi 6 AX201 160MHz (_SB.PC00.CNVW)	Fx Device	0%	0:00:01

- + PDC Phases
- + Activators
- + FX Devices
- + Processors
- + PEP Pre-Vetoes
- + SOC Subsystems

Srum Data
Data obtained from the SRUM database. * in Power Estimation means the power value is from energy meter. Otherwise, it is from software model estimation.

- + Energy Meter
- + Power Estimation

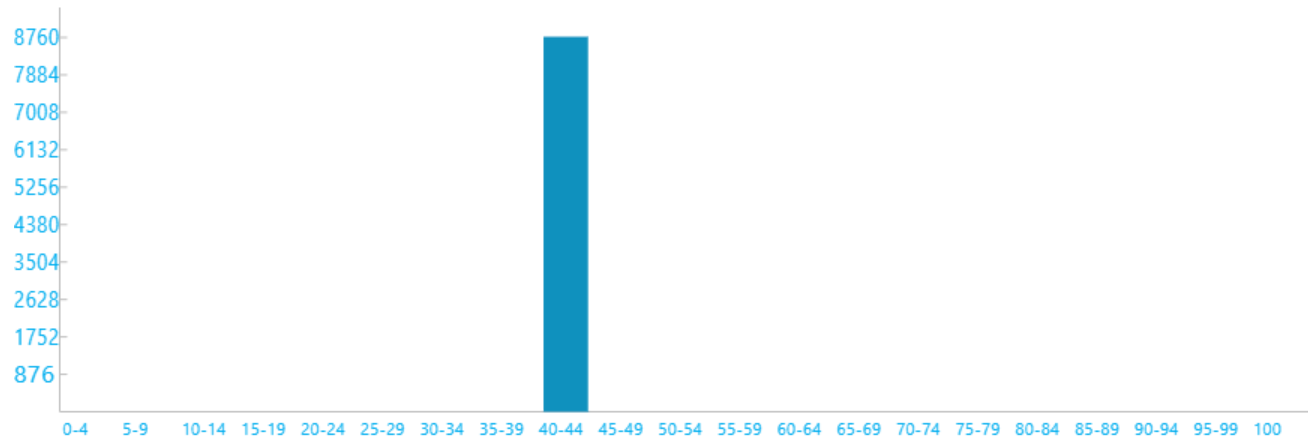
Top

System Power State: Active

	START TIME	DURATION	STATE	ENTRY REASON	EXIT REASON	% CAPACITY REMAINING AT START
104	2025-04-30 12:54:13	2:25:59	Active	MonitorOn	SwitchToDC	100%

- + Detailed Session Information

Screen Brightness Duration Histogram
Duration in seconds at various screen brightness levels



Search Indexer Data

- + Query Events:
- + Indexing File Events:

Srum Data
Data obtained from the SRUM database. * in Power Estimation means the power value is from energy meter. Otherwise, it is from software model estimation.

- + Energy Meter
- + Power Estimation

Top

System Power State: Active

	START TIME	DURATION	STATE	ENTRY REASON	EXIT REASON	% CAPACITY REMAINING AT START
105	2025-04-30 15:20:09	0:00:25	Active	Power Source Changed	----	100%

- + Detailed Session Information

Srum Data
Data obtained from the SRUM database. * in Power Estimation means the power value is from energy meter. Otherwise, it is from software model estimation.

- + Energy Meter
- + Power Estimation

Top

System Power State: Screen Off

	START TIME	DURATION	STATE	ENTRY REASON	EXIT REASON	% CAPACITY REMAINING AT START
106	2025-04-30 15:20:35	0:00:00	Screen Off	Screen Off Request	Transition To Sleep	96%

- + Detailed Session Information

This session contains no detailed information about top offenders.

Top

System Power State: Sleep

	START TIME	DURATION	STATE	ENTRY REASON	EXIT REASON	% CAPACITY REMAINING AT START
107	2025-04-30 15:20:35	0:00:07	Sleep	Transition To Sleep	Lid	96%

+ Detailed Session Information

Srum Data

Data obtained from the SRUM database. * in Power Estimation means the power value is from energy meter. Otherwise, it is from software model estimation.

+ Energy Meter

+ Power Estimation

This session contains no detailed information about top offenders.

Top

System Power State: Screen Off

	START TIME	DURATION	STATE	ENTRY REASON	EXIT REASON	% CAPACITY REMAINING AT START
108	2025-04-30 15:20:43	0:00:05	Screen Off	Lid	Transition To Sleep	96%

+ Detailed Session Information

Srum Data

Data obtained from the SRUM database. * in Power Estimation means the power value is from energy meter. Otherwise, it is from software model estimation.

+ Energy Meter

+ Power Estimation

This session contains no detailed information about top offenders.

Top

System Power State: Sleep

	START TIME	DURATION	STATE	ENERGY CHANGE	CHANGE RATE	% LOW POWER STATE TIME	% CAPACITY REMAINING AT START
109	2025-04-30 15:20:53	3:02:35	Sleep	1 460 5% of mWh battery	480 mW Drain	SW: 98% HW: 92%	96%

+ Detailed Session Information

DRIPS Histogram

Percent of time spent in DRIPS bucketed by time interval length



Top Offenders

Top 5 Offenders, ranked by active time

	NAME	TYPE	% ACTIVE TIME	ACTIVE TIME
	USB xHCI-kompatibel vrdstyrenhet (_SB.PC00.XHCI)	Fx Device	0%	0:01:34
	Intel Smart Sound Technology BUS (_SB.PC00.HDAS)	Fx Device	0%	0:01:09
	Intel(R) Wi-Fi 6 AX201 160MHz (_SB.PC00.CNVW)	Fx Device	0%	0:00:42

NAME	TYPE	% ACTIVE TIME	ACTIVE TIME
NCSI	Activator	0%	0:00:32
TCPIP	Activator	0%	0:00:17
+ PDC Phases			
+ Activators			
+ FX Devices			
+ Processors			
+ PEP Pre-Vetoes			
+ SOC Subsystems			

Srum Data

Data obtained from the SRUM database. * in Power Estimation means the power value is from energy meter. Otherwise, it is from software model estimation.

- + Energy Meter
- + Power Estimation

Top

System Power State: Screen Off

	START TIME	DURATION	STATE	ENTRY REASON	EXIT REASON	% CAPACITY REMAINING AT START
110	2025-04-30 18:23:28	0:00:00	Screen Off	Hibernate, or Shutdown	Lid	90%

- + Detailed Session Information

This session contains no detailed information about top offenders.

Top

System Power State: Active

	START TIME	DURATION	STATE	ENTRY REASON	EXIT REASON	% CAPACITY REMAINING AT START
111	2025-04-30 18:23:28	0:00:31	Active	----	----	90%

- + Detailed Session Information

Srum Data

Data obtained from the SRUM database. * in Power Estimation means the power value is from energy meter. Otherwise, it is from software model estimation.

- + Energy Meter
- + Power Estimation

Top

System Power State: Screen Off

	START TIME	DURATION	STATE	ENERGY CHANGE	CHANGE RATE	% LOW POWER STATE TIME	% CAPACITY REMAINING AT START
112	2025-04-30 18:23:59	0:09:43	Screen Off	942 3% of mWh battery	5 807 mW Drain	-	89%

- + Detailed Session Information

Top Offenders

Top 5 Offenders, ranked by active time

NAME	TYPE	% ACTIVE TIME	ACTIVE TIME
No CS Phase	PDC Phase	99%	0:09:43
+ PDC Phases			

Srum Data
Data obtained from the SRUM database. * in Power Estimation means the power value is from energy meter. Otherwise, it is from software model estimation.

- + Energy Meter
- + Power Estimation

Top

System Power State: Sleep

	START TIME	DURATION	STATE	ENERGY CHANGE	CHANGE RATE	% LOW POWER STATE TIME	% CAPACITY REMAINING AT START
113	2025-04-30 18:33:43	0:17:46	Sleep	411 1% of mWh battery	1 387 mW Drain	SW: 0% -	86%
+ Detailed Session Information							

DRIPS Histogram
Percent of time spent in DRIPS bucketed by time interval length



Top Offenders
Top 5 Offenders, ranked by active time

NAME	TYPE	% ACTIVE TIME	ACTIVE TIME
Intel Smart Sound Technology BUS (_SB.PC00.HDAS)	Fx Device	98%	0:17:32
USB xHCI-kompatibel vrdstyrenhet (_SB.PC00.XHCI)	Fx Device	6%	0:01:04
Intel(R) PCI Express Root Port #7 - A0BE (_SB.PC00.RP07)	Fx Device	1%	0:00:11
Intel(R) Wi-Fi 6 AX201 160MHz (_SB.PC00.CNVW)	Fx Device	0%	0:00:06
Low Power Phase	PDC Phase	0%	0:00:05
+ PDC Phases			
+ Activators			
+ FX Devices			
+ Processors			
+ PEP Pre-Vetoes			
+ SOC Subsystems			

Srum Data
Data obtained from the SRUM database. * in Power Estimation means the power value is from energy meter. Otherwise, it is from software model estimation.

- + Energy Meter
- + Power Estimation

Top

System Power State: Screen Off

	START TIME	DURATION	STATE	ENTRY REASON	EXIT REASON	% CAPACITY REMAINING AT START
114	2025-04-30 18:51:31	0:00:00	Screen Off	Hibernate, or Shutdown	Lid	84%

- + Detailed Session Information

This session contains no detailed information about top offenders.

Top

System Power State: Active

	START TIME	DURATION	STATE	ENTRY REASON	EXIT REASON	% CAPACITY REMAINING AT START
115	2025-04-30 18:51:31	0:00:31	Active	----	----	84%

- + Detailed Session Information

Srum Data
Data obtained from the SRUM database. * in Power Estimation means the power value is from energy meter. Otherwise, it is from software model estimation.

- + Energy Meter
- + Power Estimation

Top

System Power State: Screen Off

	START TIME	DURATION	STATE	ENERGY CHANGE	CHANGE RATE	% LOW POWER STATE TIME	% CAPACITY REMAINING AT START
116	2025-04-30 18:52:02	0:09:40	Screen Off	851 3% of mWh battery	5 278 mW Drain	-	84%

- + Detailed Session Information

Top Offenders
Top 5 Offenders, ranked by active time

NAME	TYPE	% ACTIVE TIME	ACTIVE TIME
No CS Phase	PDC Phase	99%	0:09:40

- + PDC Phases

Srum Data
Data obtained from the SRUM database. * in Power Estimation means the power value is from energy meter. Otherwise, it is from software model estimation.

- + Energy Meter
- + Power Estimation

Top

System Power State: Sleep

	START TIME	DURATION	STATE	ENERGY CHANGE	CHANGE RATE	% LOW POWER STATE TIME	% CAPACITY REMAINING AT START
117	2025-04-30 19:01:43	0:27:10	Sleep	639 2% of mWh battery	1 411 mW Drain	SW: 0% -	81%

+ Detailed Session Information

DRIPS Histogram
Percent of time spent in DRIPS bucketed by time interval length



Top Offenders
Top 5 Offenders, ranked by active time

NAME	TYPE	% ACTIVE TIME	ACTIVE TIME
Intel Smart Sound Technology BUS (_SB.PC00.HDAS)	Fx Device	99%	0:26:55
USB xHCI-kompatibel vrdstyrenhet (_SB.PC00.XHCI)	Fx Device	2%	0:00:35
Intel(R) PCI Express Root Port #7 - A0BE (_SB.PC00.RP07)	Fx Device	1%	0:00:22
Intel(R) Wi-Fi 6 AX201 160MHz (_SB.PC00.CNVW)	Fx Device	0%	0:00:06
Low Power Phase	PDC Phase	0%	0:00:05

+ PDC Phases

+ Activators

+ FX Devices

+ Processors

+ PEP Pre-Vetoes

+ SOC Subsystems

Srum Data
Data obtained from the SRUM database. * in Power Estimation means the power value is from energy meter. Otherwise, it is from software model estimation.

+ Energy Meter

+ Power Estimation

Top

System Power State: Screen Off

	START TIME	DURATION	STATE	ENERGY CHANGE	CHANGE RATE	% LOW POWER STATE TIME	% CAPACITY REMAINING AT START
118	2025-04-30 19:28:55	0:10:17	Screen Off	1 064 4% of mWh battery	6 204 mW Drain	-	78%

+ Detailed Session Information

Top Offenders

Top 5 Offenders, ranked by active time

NAME	TYPE	% ACTIVE TIME	ACTIVE TIME
No CS Phase	PDC Phase	99%	0:10:17

+ PDC Phases

Srum Data

Data obtained from the SRUM database. * in Power Estimation means the power value is from energy meter. Otherwise, it is from software model estimation.

+ Energy Meter

+ Power Estimation

Top

System Power State: Screen Off

	START TIME	DURATION	STATE	ENTRY REASON	EXIT REASON	% CAPACITY REMAINING AT START
119	2025-04-30 19:39:17	0:00:00	Screen Off	Hibernate, or Shutdown	Lid	74%

+ Detailed Session Information

This session contains no detailed information about top offenders.

Top

System Power State: Active

	START TIME	DURATION	STATE	ENTRY REASON	EXIT REASON	% CAPACITY REMAINING AT START
120	2025-04-30 19:39:17	0:00:31	Active	----	----	74%

+ Detailed Session Information

Srum Data

Data obtained from the SRUM database. * in Power Estimation means the power value is from energy meter. Otherwise, it is from software model estimation.

+ Energy Meter

+ Power Estimation

Top

System Power State: Screen Off

	START TIME	DURATION	STATE	ENERGY CHANGE	CHANGE RATE	% LOW POWER STATE TIME	% CAPACITY REMAINING AT START
121	2025-04-30 19:39:48	0:09:55	Screen Off	867 3% of mWh battery	5 245 mW Drain	-	74%

+ Detailed Session Information

Top Offenders

Top 5 Offenders, ranked by active time

NAME	TYPE	% ACTIVE TIME	ACTIVE TIME
No CS Phase	PDC Phase	99%	0:09:54

+ PDC Phases

Srum Data

Data obtained from the SRUM database. * in Power Estimation means the power value is from energy meter. Otherwise, it is from software model estimation.

+ Energy Meter

+ Power Estimation

Top

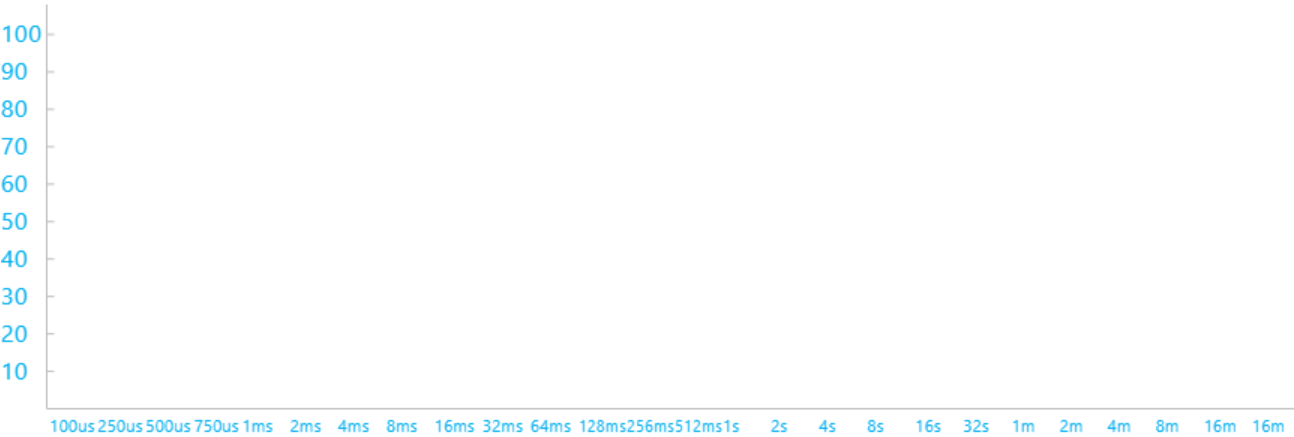
System Power State: Sleep

	START TIME	DURATION	STATE	ENERGY CHANGE	CHANGE RATE	% LOW POWER STATE TIME	% CAPACITY REMAINING AT START
122	2025-04-30 19:49:43	0:26:24	Sleep	669 2% of mWh battery	1 520 mW Drain	SW: 0%	71%

+ Detailed Session Information

DRIPS Histogram

Percent of time spent in DRIPS bucketed by time interval length



Top Offenders

Top 5 Offenders, ranked by active time

NAME	TYPE	% ACTIVE TIME	ACTIVE TIME
Intel Smart Sound Technology BUS (_SB.PC00.HDAS)	Fx Device	99%	0:26:10
Intel(R) Wi-Fi 6 AX201 160MHz (_SB.PC00.CNVW)	Fx Device	0%	0:00:05
Low Power Phase	PDC Phase	0%	0:00:05
PDC Suspend/Resume and Network-Refresh Activator	Activator	0%	0:00:02

+ PDC Phases

+ Activators

+ FX Devices

+ Processors

+ PEP Pre-Vetoos

+ SOC Subsystems

Srum Data

Data obtained from the SRUM database. * in Power Estimation means the power value is from energy meter. Otherwise, it is from software model estimation.

+ Energy Meter

+ Power Estimation

Top

System Power State: Screen Off

	START TIME	DURATION	STATE	ENTRY REASON	EXIT REASON	% CAPACITY REMAINING AT START
123	2025-04-30 20:16:07	0:00:00	Screen Off	Hibernate, or Shutdown	Lid	68%

+ Detailed Session Information

This session contains no detailed information about top offenders.

Top

System Power State: Active

	START TIME	DURATION	STATE	ENTRY REASON	EXIT REASON	% CAPACITY REMAINING AT START
124	2025-04-30 20:16:07	0:00:31	Active	----	----	68%

+ Detailed Session Information

Srum Data
Data obtained from the SRUM database. * in Power Estimation means the power value is from energy meter. Otherwise, it is from software model estimation.

+ Energy Meter

+ Power Estimation

Top

System Power State: Screen Off

	START TIME	DURATION	STATE	ENERGY CHANGE	CHANGE RATE	% LOW POWER STATE TIME	% CAPACITY REMAINING AT START
125	2025-04-30 20:16:38	0:09:34	Screen Off	897 3% of mWh battery	5 621 mW Drain	-	67%

+ Detailed Session Information

Top Offenders
Top 5 Offenders, ranked by active time

NAME	TYPE	% ACTIVE TIME	ACTIVE TIME
No CS Phase	PDC Phase	99%	0:09:34

+ PDC Phases

Srum Data
Data obtained from the SRUM database. * in Power Estimation means the power value is from energy meter. Otherwise, it is from software model estimation.

+ Energy Meter

+ Power Estimation

Top

System Power State: Sleep

	START TIME	DURATION	STATE	ENERGY CHANGE	CHANGE RATE	% LOW POWER STATE TIME	% CAPACITY REMAINING AT START
126	2025-04-30 20:26:13	0:19:04	Sleep	502 2% of mWh battery	1 579 mW Drain	SW: 0% -	64%

+ Detailed Session Information

DRIPS Histogram
Percent of time spent in DRIPS bucketed by time interval length



Top Offenders
Top 5 Offenders, ranked by active time

NAME	TYPE	% ACTIVE TIME	ACTIVE TIME
Intel Smart Sound Technology BUS (_SB.PC00.HDAS)	Fx Device	98%	0:18:50
Intel(R) PCI Express Root Port #7 - A0BE (_SB.PC00.RP07)	Fx Device	1%	0:00:11
Intel(R) Wi-Fi 6 AX201 160MHz (_SB.PC00.CNVW)	Fx Device	0%	0:00:05
Low Power Phase	PDC Phase	0%	0:00:05
PDC Suspend/Resume and Network-Refresh Activator	Activator	0%	0:00:02

+ PDC Phases

+ Activators

+ FX Devices

+ Processors

+ PEP Pre-Vetoes

+ SOC Subsystems

Srum Data
Data obtained from the SRUM database. * in Power Estimation means the power value is from energy meter. Otherwise, it is from software model estimation.

+ Energy Meter

+ Power Estimation

Top

System Power State: Screen Off

	START TIME	DURATION	STATE	ENTRY REASON	EXIT REASON	% CAPACITY REMAINING AT START
127	2025-04-30 20:45:17	0:00:00	Screen Off	Hibernate, or Shutdown	Lid	62%

+ Detailed Session Information

This session contains no detailed information about top offenders.

Top

System Power State: Active

	START TIME	DURATION	STATE	ENTRY REASON	EXIT REASON	% CAPACITY REMAINING AT START
128	2025-04-30 20:45:17	0:00:31	Active	----	----	62%

+ Detailed Session Information

Srum Data

Data obtained from the SRUM database. * in Power Estimation means the power value is from energy meter. Otherwise, it is from software model estimation.

+ Energy Meter

+ Power Estimation

Top

System Power State: Screen Off

	START TIME	DURATION	STATE	ENERGY CHANGE	CHANGE RATE	% LOW POWER STATE TIME	% CAPACITY REMAINING AT START
129	2025-04-30 20:45:49	0:09:54	Screen Off	912 3% of mWh battery	5 526 mW Drain	-	62%

+ Detailed Session Information

Top Offenders

Top 5 Offenders, ranked by active time

NAME	TYPE	% ACTIVE TIME	ACTIVE TIME
No CS Phase	PDC Phase	99%	0:09:53

+ PDC Phases

Srum Data

Data obtained from the SRUM database. * in Power Estimation means the power value is from energy meter. Otherwise, it is from software model estimation.

+ Energy Meter

+ Power Estimation

Top

System Power State: Sleep

	START TIME	DURATION	STATE	ENERGY CHANGE	CHANGE RATE	% LOW POWER STATE TIME	% CAPACITY REMAINING AT START
130	2025-04-30 20:55:43	0:23:16	Sleep	593 2% of mWh battery	1 529 mW Drain	SW: 0% -	59%

+ Detailed Session Information

DRIPS Histogram

Percent of time spent in DRIPS bucketed by time interval length



Top Offenders

Top 5 Offenders, ranked by active time

NAME	TYPE	% ACTIVE TIME	ACTIVE TIME
Intel Smart Sound Technology BUS (_SB.PC00.HDAS)	Fx Device	98%	0:23:02
Intel(R) Wi-Fi 6 AX201 160MHz (_SB.PC00.CNVW)	Fx Device	0%	0:00:06
Low Power Phase	PDC Phase	0%	0:00:05
PDC Suspend/Resume and Network-Refresh Activator	Activator	0%	0:00:02
BI	Activator	0%	0:00:01

+ PDC Phases

+ Activators

+ FX Devices

+ Processors

+ PEP Pre-Vetoes

+ SOC Subsystems

Srum Data

Data obtained from the SRUM database. * in Power Estimation means the power value is from energy meter. Otherwise, it is from software model estimation.

+ Energy Meter

+ Power Estimation

Top

System Power State: Screen Off

	START TIME	DURATION	STATE	ENTRY REASON	EXIT REASON	% CAPACITY REMAINING AT START
131	2025-04-30 21:18:59	0:00:00	Screen Off	Hibernate, or Shutdown	Lid	56%

+ Detailed Session Information

This session contains no detailed information about top offenders.

Top

System Power State: Active

	START TIME	DURATION	STATE	ENTRY REASON	EXIT REASON	% CAPACITY REMAINING AT START
132	2025-04-30 21:18:59	0:00:31	Active	----	----	56%

+ Detailed Session Information

Srum Data

Data obtained from the SRUM database. * in Power Estimation means the power value is from energy meter. Otherwise, it is from software model estimation.

+ Energy Meter

+ Power Estimation

Top

System Power State: Screen Off

	START TIME	DURATION	STATE	ENERGY CHANGE		CHANGE RATE		% LOW POWER STATE TIME	% CAPACITY REMAINING AT START
133	2025-04-30 21:19:30	0:09:42	Screen Off	881 3% of mWh battery		5 445 mW	Drain	-	56%

+ Detailed Session Information

Top Offenders

Top 5 Offenders, ranked by active time

NAME	TYPE	% ACTIVE TIME	ACTIVE TIME
No CS Phase	PDC Phase	99%	0:09:42

+ PDC Phases

Srum Data

Data obtained from the SRUM database. * in Power Estimation means the power value is from energy meter. Otherwise, it is from software model estimation.

+ Energy Meter

+ Power Estimation

Top

System Power State: Sleep

	START TIME	DURATION	STATE	ENERGY CHANGE		CHANGE RATE		% LOW POWER STATE TIME	% CAPACITY REMAINING AT START
134	2025-04-30 21:29:13	0:24:07	Sleep	624 2% of mWh battery		1 552 mW	Drain	SW: 0% -	53%

+ Detailed Session Information

DRIPS Histogram

Percent of time spent in DRIPS bucketed by time interval length



Top Offenders

Top 5 Offenders, ranked by active time

NAME	TYPE	% ACTIVE TIME	ACTIVE TIME
Intel Smart Sound Technology BUS (_SB.PC00.HDAS)	Fx Device	99%	0:23:53
Intel(R) PCI Express Root Port #7 - A0BE (_SB.PC00.RP07)	Fx Device	0%	0:00:11
Low Power Phase	PDC Phase	0%	0:00:05
Intel(R) Wi-Fi 6 AX201 160MHz (_SB.PC00.CNVW)	Fx Device	0%	0:00:05
PDC Suspend/Resume and Network-Refresh Activator	Activator	0%	0:00:02

+ PDC Phases

+ Activators

+ FX Devices

+ Processors

+ PEP Pre-Vetoes

+ SOC Subsystems

Srum Data

Data obtained from the SRUM database. * in Power Estimation means the power value is from energy meter. Otherwise, it is from software model estimation.

+ Energy Meter

+ Power Estimation

Top

System Power State: Screen Off

	START TIME	DURATION	STATE	ENTRY REASON	EXIT REASON	% CAPACITY REMAINING AT START
135	2025-04-30 21:53:20	0:00:00	Screen Off	Hibernate, or Shutdown	Lid	50%

+ Detailed Session Information

This session contains no detailed information about top offenders.

Top

System Power State: Active

	START TIME	DURATION	STATE	ENTRY REASON	EXIT REASON	% CAPACITY REMAINING AT START
136	2025-04-30 21:53:20	0:00:31	Active	----	----	50%

+ Detailed Session Information

Srum Data

Data obtained from the SRUM database. * in Power Estimation means the power value is from energy meter. Otherwise, it is from software model estimation.

+ Energy Meter

+ Power Estimation

Top

System Power State: Screen Off

	START TIME	DURATION	STATE	ENERGY CHANGE	CHANGE RATE	% LOW POWER STATE TIME	% CAPACITY REMAINING AT START
137	2025-04-30 21:53:51	0:09:51	Screen Off	881 mWh 3% of battery	5 359 mW Drain	-	50%

+ Detailed Session Information

Top Offenders

Top 5 Offenders, ranked by active time

NAME	TYPE	% ACTIVE TIME	ACTIVE TIME
No CS Phase	PDC Phase	99%	0:09:51

+ PDC Phases

Srum Data

Data obtained from the SRUM database. * in Power Estimation means the power value is from energy meter. Otherwise, it is from software model estimation.

+ Energy Meter

+ Power Estimation



System Power State: Sleep

	START TIME	DURATION	STATE	ENERGY CHANGE		CHANGE RATE		% LOW POWER STATE TIME		% CAPACITY REMAINING AT START
138	2025-04-30 22:03:43	0:25:00	Sleep	639 mWh	2% of battery	1 534 mW	Drain	SW: 0%	-	47%

+ Detailed Session Information

DRIPS Histogram

Percent of time spent in DRIPS bucketed by time interval length



Top Offenders

Top 5 Offenders, ranked by active time

NAME	TYPE	% ACTIVE TIME	ACTIVE TIME
Intel Smart Sound Technology BUS (_SB.PC00.HDAS)	Fx Device	98%	0:24:44
Intel(R) Wi-Fi 6 AX201 160MHz (_SB.PC00.CNVW)	Fx Device	0%	0:00:05
Low Power Phase	PDC Phase	0%	0:00:05
BI	Activator	0%	0:00:02
PDC Suspend/Resume and Network-Refresh Activator	Activator	0%	0:00:02

+ PDC Phases

+ Activators

+ FX Devices

+ Processors

+ PEP Pre-Vetoes

+ SOC Subsystems

Srum Data

Data obtained from the SRUM database. * in Power Estimation means the power value is from energy meter. Otherwise, it is from software model estimation.

+ Energy Meter

+ Power Estimation



System Power State: Screen Off

	START TIME	DURATION	STATE	ENTRY REASON	EXIT REASON	% CAPACITY REMAINING AT START
139	2025-04-30 22:28:43	0:00:00	Screen Off	Hibernate, or Shutdown	Lid	44%

+ Detailed Session Information

This session contains no detailed information about top offenders.



System Power State: Active

	START TIME	DURATION	STATE	ENTRY REASON	EXIT REASON	% CAPACITY REMAINING AT START
140	2025-04-30 22:28:43	0:00:31	Active	----	----	44%

+ Detailed Session Information

Srum Data

Data obtained from the SRUM database. * in Power Estimation means the power value is from energy meter. Otherwise, it is from software model estimation.

+ Energy Meter

+ Power Estimation



System Power State: Screen Off

	START TIME	DURATION	STATE	ENERGY CHANGE	CHANGE RATE	% LOW POWER STATE TIME	% CAPACITY REMAINING AT START
141	2025-04-30 22:29:14	0:09:58	Screen Off	897 3% of mWh battery	5 397 mW Drain	-	44%

+ Detailed Session Information

Top Offenders

Top 5 Offenders, ranked by active time

NAME	TYPE	% ACTIVE TIME	ACTIVE TIME
No CS Phase	PDC Phase	99%	0:09:58

+ PDC Phases

Srum Data

Data obtained from the SRUM database. * in Power Estimation means the power value is from energy meter. Otherwise, it is from software model estimation.

+ Energy Meter

+ Power Estimation

Top

System Power State: Sleep

	START TIME	DURATION	STATE	ENERGY CHANGE	CHANGE RATE	% LOW POWER STATE TIME	% CAPACITY REMAINING AT START
142	2025-04-30 22:39:13	0:19:54	Sleep	532 2% of mWh battery	1 604 mW Drain	SW: 0% -	40%

+ Detailed Session Information

DRIPS Histogram

Percent of time spent in DRIPS bucketed by time interval length



Top Offenders

Top 5 Offenders, ranked by active time

NAME	TYPE	% ACTIVE TIME	ACTIVE TIME
Intel Smart Sound Technology BUS (_SB.PC00.HDAS)	Fx Device	98%	0:19:37
Low Power Phase	PDC Phase	0%	0:00:05
Intel(R) Wi-Fi 6 AX201 160MHz (_SB.PC00.CNVW)	Fx Device	0%	0:00:04
BI	Activator	0%	0:00:03
PDC Suspend/Resume and Network-Refresh Activator	Activator	0%	0:00:02

+ PDC Phases

+ Activators

+ FX Devices

+ Processors

+ PEP Pre-Vetoos

+ SOC Subsystems

Srum Data

Data obtained from the SRUM database. * in Power Estimation means the power value is from energy meter. Otherwise, it is from software model estimation.

+ Energy Meter

+ Power Estimation

Top

System Power State: Screen Off

	START TIME	DURATION	STATE	ENERGY CHANGE	CHANGE RATE	% LOW POWER STATE TIME	% CAPACITY REMAINING AT START
143	2025-04-30 22:59:07	0:10:05	Screen Off	943 3% of mWh battery	5 604 mW Drain	-	38%

+ Detailed Session Information

Top Offenders

Top 5 Offenders, ranked by active time

NAME	TYPE	% ACTIVE TIME	ACTIVE TIME
No CS Phase	PDC Phase	99%	0:10:05

+ PDC Phases

Srum Data

Data obtained from the SRUM database. * in Power Estimation means the power value is from energy meter. Otherwise, it is from software model estimation.

+ Energy Meter

+ Power Estimation

Top

System Power State: Screen Off

	START TIME	DURATION	STATE	ENTRY REASON	EXIT REASON	% CAPACITY REMAINING AT START
144	2025-04-30 23:09:17	0:00:00	Screen Off	Hibernate, or Shutdown	Lid	35%

+ Detailed Session Information

This session contains no detailed information about top offenders.

Top

System Power State: Active

	START TIME	DURATION	STATE	ENTRY REASON	EXIT REASON	% CAPACITY REMAINING AT START
145	2025-04-30 23:09:17	0:00:31	Active	----	----	35%

+ Detailed Session Information

Srum Data

Data obtained from the SRUM database. * in Power Estimation means the power value is from energy meter. Otherwise, it is from software model estimation.

+ Energy Meter

+ Power Estimation

Top

System Power State: Screen Off

	START TIME	DURATION	STATE	ENERGY CHANGE	CHANGE RATE	% LOW POWER STATE TIME	% CAPACITY REMAINING AT START
146	2025-04-30 23:09:48	0:09:55	Screen Off	912 3% of mWh battery	5 516 mW Drain	-	34%

+ Detailed Session Information

Top Offenders

Top 5 Offenders, ranked by active time

NAME	TYPE	% ACTIVE TIME	ACTIVE TIME
No CS Phase	PDC Phase	99%	0:09:54

+ PDC Phases

Srum Data
Data obtained from the SRUM database. * in Power Estimation means the power value is from energy meter. Otherwise, it is from software model estimation.

+ Energy Meter

+ Power Estimation

Top

System Power State: Sleep

	START TIME	DURATION	STATE	ENERGY CHANGE	CHANGE RATE	% LOW POWER STATE TIME	% CAPACITY REMAINING AT START
147	2025-04-30 23:19:43	0:18:08	Sleep	471 2% of mWh battery	1 558 mW Drain	SW: 0% -	31%

+ Detailed Session Information

DRIPS Histogram
Percent of time spent in DRIPS bucketed by time interval length



Top Offenders
Top 5 Offenders, ranked by active time

NAME	TYPE	% ACTIVE TIME	ACTIVE TIME
Intel Smart Sound Technology BUS (_SB.PC00.HDAS)	Fx Device	98%	0:17:54
Intel(R) PCI Express Root Port #7 - A0BE (_SB.PC00.RP07)	Fx Device	1%	0:00:11
Low Power Phase	PDC Phase	0%	0:00:05
Intel(R) Wi-Fi 6 AX201 160MHz (_SB.PC00.CNVW)	Fx Device	0%	0:00:05
PDC Suspend/Resume and Network-Refresh Activator	Activator	0%	0:00:02

+ PDC Phases

+ Activators

+ FX Devices

+ Processors

+ PEP Pre-Vetoos

+ SOC Subsystems

Srum Data

Data obtained from the SRUM database. * in Power Estimation means the power value is from energy meter. Otherwise, it is from software model estimation.

+ Energy Meter

+ Power Estimation

Top

System Power State: Screen Off

	START TIME	DURATION	STATE	ENTRY REASON	EXIT REASON	% CAPACITY REMAINING AT START
148	2025-04-30 23:37:51	0:00:00	Screen Off	Hibernate, or Shutdown	Lid	29%

+ Detailed Session Information

This session contains no detailed information about top offenders.

Top

System Power State: Active

	START TIME	DURATION	STATE	ENTRY REASON	EXIT REASON	% CAPACITY REMAINING AT START
149	2025-04-30 23:37:51	0:00:30	Active	----	----	29%

+ Detailed Session Information

Srum Data

Data obtained from the SRUM database. * in Power Estimation means the power value is from energy meter. Otherwise, it is from software model estimation.

+ Energy Meter

+ Power Estimation

Top

System Power State: Screen Off

	START TIME	DURATION	STATE	ENERGY CHANGE		CHANGE RATE	% LOW POWER STATE TIME	% CAPACITY REMAINING AT START
150	2025-04-30 23:38:22	0:09:50	Screen Off	866 mWh	3% of battery	5 279 mW Drain	-	29%

+ Detailed Session Information

Top Offenders

Top 5 Offenders, ranked by active time

NAME	TYPE	% ACTIVE TIME	ACTIVE TIME
No CS Phase	PDC Phase	99%	0:09:50

+ PDC Phases

Srum Data

Data obtained from the SRUM database. * in Power Estimation means the power value is from energy meter. Otherwise, it is from software model estimation.

+ Energy Meter

+ Power Estimation

Top

System Power State: Sleep

	START TIME	DURATION	STATE	ENERGY CHANGE	CHANGE RATE	% LOW POWER STATE TIME	% CAPACITY REMAINING AT START
151	2025-04-30 23:48:13	0:24:49	Sleep	654 2% of mWh battery	1 581 mW	Drain SW: 0%	- 26%

+ Detailed Session Information

DRIPS Histogram
Percent of time spent in DRIPS bucketed by time interval length



Top Offenders
Top 5 Offenders, ranked by active time

NAME	TYPE	% ACTIVE TIME	ACTIVE TIME
Intel Smart Sound Technology BUS (_SB.PC00.HDAS)	Fx Device	99%	0:24:35
Intel(R) PCI Express Root Port #7 - A0BE (_SB.PC00.RP07)	Fx Device	2%	0:00:34
Intel(R) Wi-Fi 6 AX201 160MHz (_SB.PC00.CNVW)	Fx Device	0%	0:00:06
Low Power Phase	PDC Phase	0%	0:00:05
PDC Suspend/Resume and Network-Refresh Activator	Activator	0%	0:00:02

+ PDC Phases

+ Activators

+ FX Devices

+ Processors

+ PEP Pre-Vetoes

+ SOC Subsystems

Srum Data
Data obtained from the SRUM database. * in Power Estimation means the power value is from energy meter. Otherwise, it is from software model estimation.

+ Energy Meter

+ Power Estimation

Top

System Power State: Screen Off

	START TIME	DURATION	STATE	ENTRY REASON	EXIT REASON	% CAPACITY REMAINING AT START
152	2025-05-01 00:13:02	0:00:00	Screen Off	Hibernate, or Shutdown	Lid	23%

+ Detailed Session Information

This session contains no detailed information about top offenders.

Top

System Power State: Active

	START TIME	DURATION	STATE	ENTRY REASON	EXIT REASON	% CAPACITY REMAINING AT START
153	2025-05-01 00:13:02	0:00:30	Active	----	----	23%

+ Detailed Session Information

Srum Data
Data obtained from the SRUM database. * in Power Estimation means the power value is from energy meter. Otherwise, it is from software model estimation.

+ Energy Meter

+ Power Estimation

Top

System Power State: Screen Off

	START TIME	DURATION	STATE	ENTRY REASON	EXIT REASON	% CAPACITY REMAINING AT START
154	2025-05-01 00:13:33	0:09:39	Screen Off	Video Idle Timeout	Hibernate, or Shutdown	23%

+ Detailed Session Information

Srum Data
Data obtained from the SRUM database. * in Power Estimation means the power value is from energy meter. Otherwise, it is from software model estimation.

+ Energy Meter

+ Power Estimation

This session contains no detailed information about top offenders.

Top

System Power State: Screen Off

	START TIME	DURATION	STATE	ENTRY REASON	EXIT REASON	% CAPACITY REMAINING AT START
155	2025-05-01 00:23:16	0:00:00	Screen Off	Hibernate, or Shutdown	Lid	19%

+ Detailed Session Information

This session contains no detailed information about top offenders.

Top

System Power State: Active

	START TIME	DURATION	STATE	ENTRY REASON	EXIT REASON	% CAPACITY REMAINING AT START
156	2025-05-01 00:23:16	0:00:31	Active	----	----	19%

+ Detailed Session Information

Srum Data
Data obtained from the SRUM database. * in Power Estimation means the power value is from energy meter. Otherwise, it is from software model estimation.

+ Energy Meter

+ Power Estimation

Top

System Power State: Screen Off

	START TIME	DURATION	STATE	ENTRY REASON	EXIT REASON	% CAPACITY REMAINING AT START
157	2025-05-01 00:23:47	0:09:55	Screen Off	Video Idle Timeout	Hibernate, or Shutdown	18%

+ Detailed Session Information

Srum Data
Data obtained from the SRUM database. * in Power Estimation means the power value is from energy meter. Otherwise, it is from software model estimation.

+ Energy Meter

+ Power Estimation

This session contains no detailed information about top offenders.

Top

System Power State: Screen Off

	START TIME	DURATION	STATE	ENTRY REASON	EXIT REASON	% CAPACITY REMAINING AT START
158	2025-05-01 00:33:46	0:00:00	Screen Off	Hibernate, or Shutdown	Lid	15%

+ Detailed Session Information

This session contains no detailed information about top offenders.

Top

System Power State: Active

	START TIME	DURATION	STATE	ENTRY REASON	EXIT REASON	% CAPACITY REMAINING AT START
159	2025-05-01 00:33:46	0:00:31	Active	----	----	15%

+ Detailed Session Information

Srum Data
Data obtained from the SRUM database. * in Power Estimation means the power value is from energy meter. Otherwise, it is from software model estimation.

+ Energy Meter

+ Power Estimation

Top

System Power State: Screen Off

	START TIME	DURATION	STATE	ENTRY REASON	EXIT REASON	% CAPACITY REMAINING AT START
160	2025-05-01 00:34:17	0:09:55	Screen Off	Video Idle Timeout	Hibernate, or Shutdown	15%

+ Detailed Session Information

Srum Data
Data obtained from the SRUM database. * in Power Estimation means the power value is from energy meter. Otherwise, it is from software model estimation.

+ Energy Meter

+ Power Estimation

This session contains no detailed information about top offenders.

Top

System Power State: Screen Off

	START TIME	DURATION	STATE	ENTRY REASON	EXIT REASON	% CAPACITY REMAINING AT START
161	2025-05-01 00:44:16	0:00:00	Screen Off	Hibernate, or Shutdown	Lid	12%

+ Detailed Session Information

This session contains no detailed information about top offenders.

Top

System Power State: Active

	START TIME	DURATION	STATE	ENTRY REASON	EXIT REASON	% CAPACITY REMAINING AT START
162	2025-05-01 00:44:16	0:00:31	Active	----	----	12%

+ Detailed Session Information

Srum Data

Data obtained from the SRUM database. * in Power Estimation means the power value is from energy meter. Otherwise, it is from software model estimation.

+ Energy Meter

+ Power Estimation

Top

System Power State: Screen Off

	START TIME	DURATION	STATE	ENTRY REASON	EXIT REASON	% CAPACITY REMAINING AT START
163	2025-05-01 00:44:47	0:09:55	Screen Off	Video Idle Timeout	Hibernate, or Shutdown	11%

+ Detailed Session Information

Srum Data

Data obtained from the SRUM database. * in Power Estimation means the power value is from energy meter. Otherwise, it is from software model estimation.

+ Energy Meter

+ Power Estimation

This session contains no detailed information about top offenders.

Top

System Power State: Screen Off

	START TIME	DURATION	STATE	ENTRY REASON	EXIT REASON	% CAPACITY REMAINING AT START
164	2025-05-01 00:54:46	0:00:00	Screen Off	Hibernate, or Shutdown	Lid	8%

+ Detailed Session Information

This session contains no detailed information about top offenders.

Top

System Power State: Active

	START TIME	DURATION	STATE	ENTRY REASON	EXIT REASON	% CAPACITY REMAINING AT START
165	2025-05-01 00:54:46	0:00:31	Active	----	----	8%

+ Detailed Session Information

Srum Data

Data obtained from the SRUM database. * in Power Estimation means the power value is from energy meter. Otherwise, it is from software model estimation.

+ Energy Meter

+ Power Estimation

Top

System Power State: Screen Off

	START TIME	DURATION	STATE	ENTRY REASON	EXIT REASON	% CAPACITY REMAINING AT START
166	2025-05-01 00:55:17	0:00:40	Screen Off	Video Idle Timeout	Battery PreCritical	8%

+ Detailed Session Information

Srum Data

Data obtained from the SRUM database. * in Power Estimation means the power value is from energy meter. Otherwise, it is from software model estimation.

+ Energy Meter

+ Power Estimation

This session contains no detailed information about top offenders.

Top

System Power State: Screen Off

	START TIME	DURATION	STATE	ENTRY REASON	EXIT REASON	% CAPACITY REMAINING AT START
167	2025-05-01 00:55:58	0:02:38	Screen Off	Battery PreCritical	Hibernate, or Shutdown	7%

+ Detailed Session Information

Srum Data

Data obtained from the SRUM database. * in Power Estimation means the power value is from energy meter. Otherwise, it is from software model estimation.

+ Energy Meter

+ Power Estimation

This session contains no detailed information about top offenders.

Top

System Power State: Screen Off

	START TIME	DURATION	STATE	ENTRY REASON	EXIT REASON	% CAPACITY REMAINING AT START
168	2025-05-01 00:58:36	0:00:00	Screen Off	Hibernate, or Shutdown	Lid	7%

+ Detailed Session Information

This session contains no detailed information about top offenders.

Top

System Power State: Active

	START TIME	DURATION	STATE	ENTRY REASON	EXIT REASON	% CAPACITY REMAINING AT START
169	2025-05-01 00:58:36	0:00:31	Active	----	----	7%

+ Detailed Session Information

Srum Data
Data obtained from the SRUM database. * in Power Estimation means the power value is from energy meter. Otherwise, it is from software model estimation.

+ Energy Meter

+ Power Estimation

Top

System Power State: Screen Off

	START TIME	DURATION	STATE	ENTRY REASON	EXIT REASON	% CAPACITY REMAINING AT START
170	2025-05-01 00:59:07	0:09:35	Screen Off	Video Idle Timeout	Hibernate, or Shutdown	6%

+ Detailed Session Information

Srum Data
Data obtained from the SRUM database. * in Power Estimation means the power value is from energy meter. Otherwise, it is from software model estimation.

+ Energy Meter

+ Power Estimation

This session contains no detailed information about top offenders.

Top

System Power State: Screen Off

	START TIME	DURATION	STATE	ENTRY REASON	EXIT REASON	% CAPACITY REMAINING AT START
171	2025-05-01 01:08:46	0:00:00	Screen Off	Hibernate, or Shutdown	Lid	3%

+ Detailed Session Information

This session contains no detailed information about top offenders.

Top

System Power State: Active

	START TIME	DURATION	STATE	ENTRY REASON	EXIT REASON	% CAPACITY REMAINING AT START
172	2025-05-01 01:08:46	0:00:31	Active	----	----	3%

+ Detailed Session Information

Srum Data
Data obtained from the SRUM database. * in Power Estimation means the power value is from energy meter. Otherwise, it is from software model estimation.

+ Energy Meter

+ Power Estimation

Top

System Power State: Screen Off

	START TIME	DURATION	STATE	ENERGY CHANGE	CHANGE RATE	% LOW POWER STATE TIME	% CAPACITY REMAINING AT START
173	2025-05-01 01:09:17	0:09:55	Screen Off	456 2% of mWh battery	2 755 mW Drain	-	3%

+ Detailed Session Information

Top Offenders

Top 5 Offenders, ranked by active time

NAME	TYPE	% ACTIVE TIME	ACTIVE TIME
No CS Phase	PDC Phase	99%	0:09:55

+ PDC Phases

Srum Data

Data obtained from the SRUM database. * in Power Estimation means the power value is from energy meter. Otherwise, it is from software model estimation.

+ Energy Meter

+ Power Estimation

Top

System Power State: Sleep

	START TIME	DURATION	STATE	ENERGY CHANGE	CHANGE RATE	% LOW POWER STATE TIME	% CAPACITY REMAINING AT START
174	2025-05-01 01:19:13	0:03:18	Sleep	61 0% of mWh battery	1 108 mW Drain	SW: 0% -	2%

+ Detailed Session Information

DRIPS Histogram

Percent of time spent in DRIPS bucketed by time interval length



Top Offenders

Top 5 Offenders, ranked by active time

NAME	TYPE	% ACTIVE TIME	ACTIVE TIME
Intel Smart Sound Technology BUS (_SB.PC00.HDAS)	Fx Device	91%	0:03:00
Host Activity Manager	Activator	2%	0:00:05
Low Power Phase	PDC Phase	2%	0:00:05
PDC Suspend/Resume and Network-Refresh Activator	Activator	1%	0:00:02

- + PDC Phases
- + Activators
- + FX Devices
- + Processors
- + PEP Pre-Vetoes
- + SOC Subsystems

Srum Data
Data obtained from the SRUM database. * in Power Estimation means the power value is from energy meter. Otherwise, it is from software model estimation.

- + Energy Meter
- + Power Estimation

Top

System Power State: Screen Off

	START TIME	DURATION	STATE	ENTRY REASON	EXIT REASON	% CAPACITY REMAINING AT START
175	2025-05-01 01:22:30	0:00:00	Screen Off	Hibernate, or Shutdown	Lid	1%

- + Detailed Session Information

This session contains no detailed information about top offenders.

Top

System Power State: Active

	START TIME	DURATION	STATE	ENTRY REASON	EXIT REASON	% CAPACITY REMAINING AT START
176	2025-05-01 01:22:30	0:00:31	Active	----	----	1%

- + Detailed Session Information

Srum Data
Data obtained from the SRUM database. * in Power Estimation means the power value is from energy meter. Otherwise, it is from software model estimation.

- + Energy Meter
- + Power Estimation

Top

System Power State: Screen Off

	START TIME	DURATION	STATE	ENTRY REASON	EXIT REASON	% CAPACITY REMAINING AT START
177	2025-05-01 01:23:02	0:00:00	Screen Off	Video Idle Timeout	Unknown	-

- + Detailed Session Information

This session contains no detailed information about top offenders.

Top

System Power State: Abnormal Shutdown

	START TIME	DURATION	STATE	ENTRY REASON	EXIT REASON	% CAPACITY REMAINING AT START
178	2025-05-01 22:09:50	0:00:00	Abnormal Shutdown	Unknown	Unknown	-

+ Detailed Session Information

Top

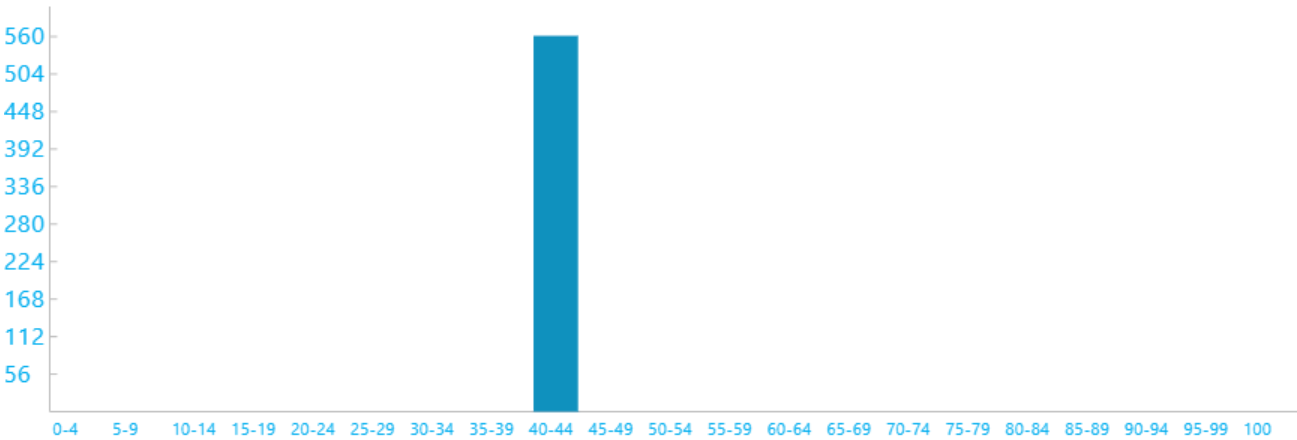
System Power State: Active

	START TIME	DURATION	STATE	ENTRY REASON	EXIT REASON	% CAPACITY REMAINING AT START
179	2025-05-01 22:10:08	0:09:15	Active	Initialization	MonitorOff	-

+ Detailed Session Information

Screen Brightness Duration Histogram

Duration in seconds at various screen brightness levels



Search Indexer Data

+ Indexing File Events:

Srum Data

Data obtained from the SRUM database. * in Power Estimation means the power value is from energy meter. Otherwise, it is from software model estimation.

+ Energy Meter

+ Power Estimation

Top

System Power State: Screen Off

	START TIME	DURATION	STATE	ENTRY REASON	EXIT REASON	% CAPACITY REMAINING AT START
180	2025-05-01 22:19:22	0:00:00	Screen Off	Screen Off Request	Transition To Sleep	100%

+ Detailed Session Information

This session contains no detailed information about top offenders.

Top

System Power State: Sleep

	START TIME	DURATION	STATE	ENTRY REASON	EXIT REASON	% CAPACITY REMAINING AT START
181	2025-05-01 22:19:22	0:00:00	Sleep	Transition To Sleep	PDC Task Client: Windows Update Client	100%

+ Detailed Session Information

This session contains no detailed information about top offenders.

Top

System Power State: Screen Off

	START TIME	DURATION	STATE	ENTRY REASON	EXIT REASON	% CAPACITY REMAINING AT START
182	2025-05-01 22:19:23	0:00:00	Screen Off	PDC Task Client: Windows Update Client	AC/DC Display Burst Suppressed	100%

+ Detailed Session Information

This session contains no detailed information about top offenders.

Top

System Power State: Screen Off

	START TIME	DURATION	STATE	ENTRY REASON	EXIT REASON	% CAPACITY REMAINING AT START
183	2025-05-01 22:19:23	0:00:00	Screen Off	AC/DC Display Burst Suppressed	Transition To Sleep	100%

+ Detailed Session Information

This session contains no detailed information about top offenders.

Top

System Power State: Sleep

	START TIME	DURATION	STATE	ENTRY REASON	EXIT REASON	% CAPACITY REMAINING AT START
184	2025-05-01 22:19:23	0:00:06	Sleep	Transition To Sleep	Lid	100%

+ Detailed Session Information

Srum Data

Data obtained from the SRUM database. * in Power Estimation means the power value is from energy meter. Otherwise, it is from software model estimation.

+ Energy Meter

+ Power Estimation

This session contains no detailed information about top offenders.

Top

System Power State: Screen Off

	START TIME	DURATION	STATE	ENTRY REASON	EXIT REASON	% CAPACITY REMAINING AT START
185	2025-05-01 22:19:30	0:00:05	Screen Off	Lid	Transition To Sleep	100%

+ Detailed Session Information

Srum Data

Data obtained from the SRUM database. * in Power Estimation means the power value is from energy meter. Otherwise, it is from software model estimation.

+ Energy Meter

+ Power Estimation

This session contains no detailed information about top offenders.

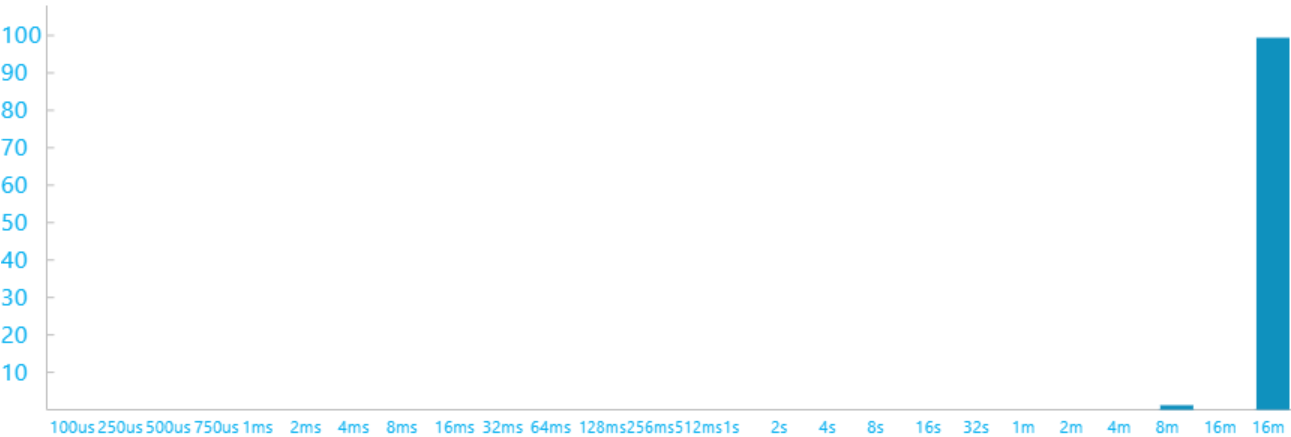
Top

System Power State: Sleep

	START TIME	DURATION	STATE	ENERGY CHANGE	CHANGE RATE	% LOW POWER STATE TIME	% CAPACITY REMAINING AT START
186	2025-05-01 22:19:40	10:53:08	Sleep	4 484 16% of mWh battery	412 mW Drain	SW: 100% HW: 97%	100%

+ Detailed Session Information

DRIPS Histogram
Percent of time spent in DRIPS bucketed by time interval length



Top Offenders
Top 5 Offenders, ranked by active time

NAME	TYPE	% ACTIVE TIME	ACTIVE TIME
Intel(R) Wi-Fi 6 AX201 160MHz (_SB.PC00.CNVW)	Fx Device	0%	0:00:10
WU	Activator	0%	0:00:06
Low Power Phase	PDC Phase	0%	0:00:05
USB xHCI-kompatibel vrdstyrenhet (_SB.PC00.XHCI)	Fx Device	0%	0:00:04
DHCP	Activator	0%	0:00:02

+ PDC Phases

+ Activators

+ FX Devices

+ Processors

+ PEP Pre-Vetoes

+ SOC Subsystems

Srum Data
Data obtained from the SRUM database. * in Power Estimation means the power value is from energy meter. Otherwise, it is from software model estimation.

+ Energy Meter

+ Power Estimation

Top

System Power State: Hibernate

	START TIME	DURATION	STATE	ENTRY REASON	EXIT REASON	% CAPACITY REMAINING AT START
187	2025-05-02 09:12:41	1:24:53	Hibernate	Hibernate from Sleep - Standby Battery Budget Exceeded	Unknown	84%

+ Detailed Session Information

Srum Data
Data obtained from the SRUM database. * in Power Estimation means the power value is from energy meter. Otherwise, it is from software model estimation.

+ Energy Meter

+ Power Estimation

Top

System Power State: Screen Off

	START TIME	DURATION	STATE	ENTRY REASON	EXIT REASON	% CAPACITY REMAINING AT START
188	2025-05-02 10:37:35	0:00:00	Screen Off	Hibernate, or Shutdown	Lid	84%

+ Detailed Session Information

This session contains no detailed information about top offenders.

Top

System Power State: Active

	START TIME	DURATION	STATE	ENTRY REASON	EXIT REASON	% CAPACITY REMAINING AT START
189	2025-05-02 10:37:35	0:01:07	Active	----	Unknown	84%

+ Detailed Session Information

Srum Data
Data obtained from the SRUM database. * in Power Estimation means the power value is from energy meter. Otherwise, it is from software model estimation.

+ Energy Meter

+ Power Estimation

Top

System Power State: Report Generated

	START TIME	DURATION	STATE	ENTRY REASON	EXIT REASON	% CAPACITY REMAINING AT START
190	2025-05-02 10:38:42	0:00:00	Report Generated	----	----	-

+ Detailed Session Information

Installed Batteries

Information about each currently installed battery

	BATTERY 1
NAME	DELL 4M1JN15
MANUFACTURER	BYD
SERIAL NUMBER	1035

	BATTERY 1
CHEMISTRY	LiP
DESIGN CAPACITY	61834mWh
CAPACITY RATIO	45
CYCLE COUNT	0